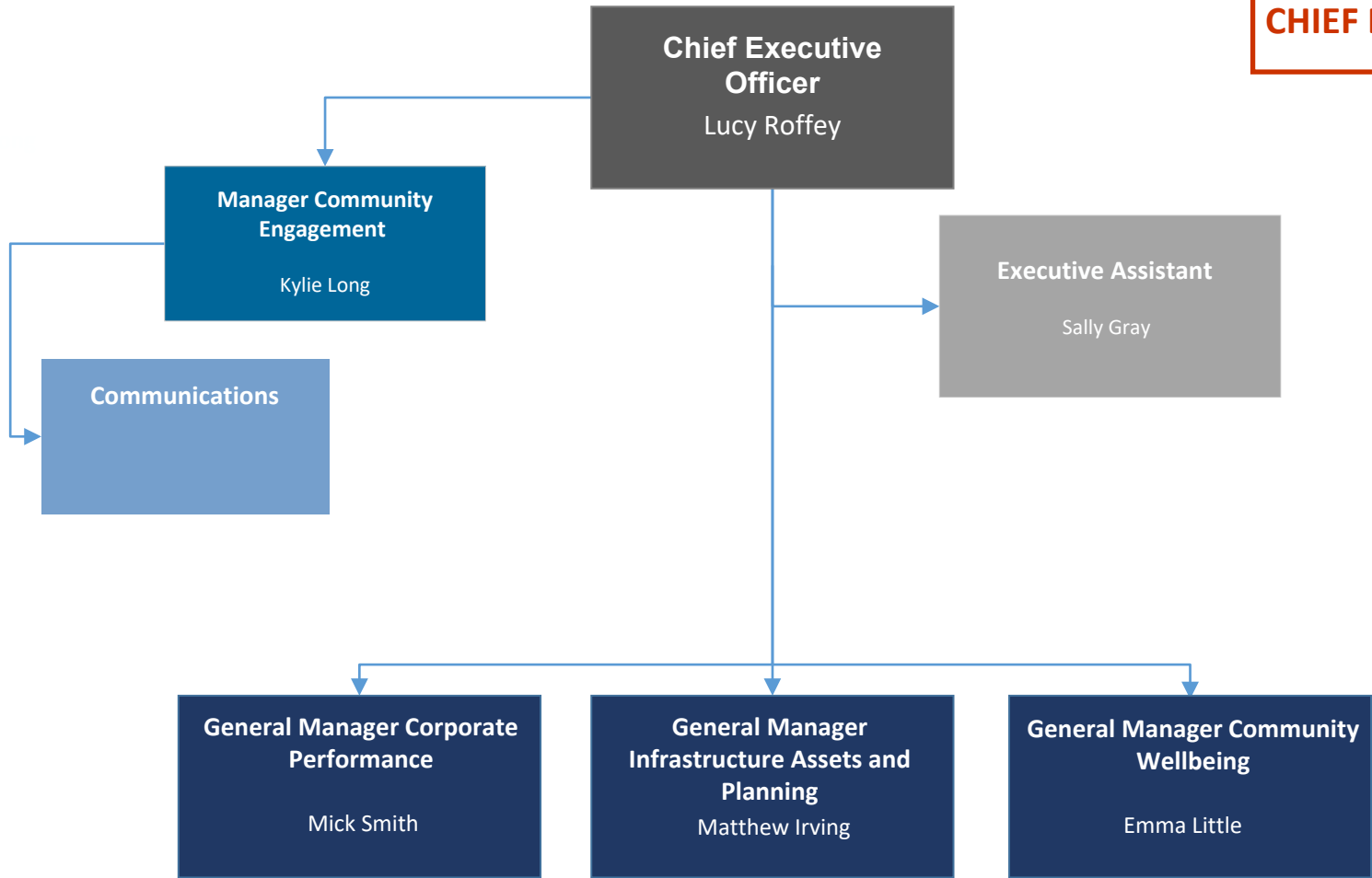
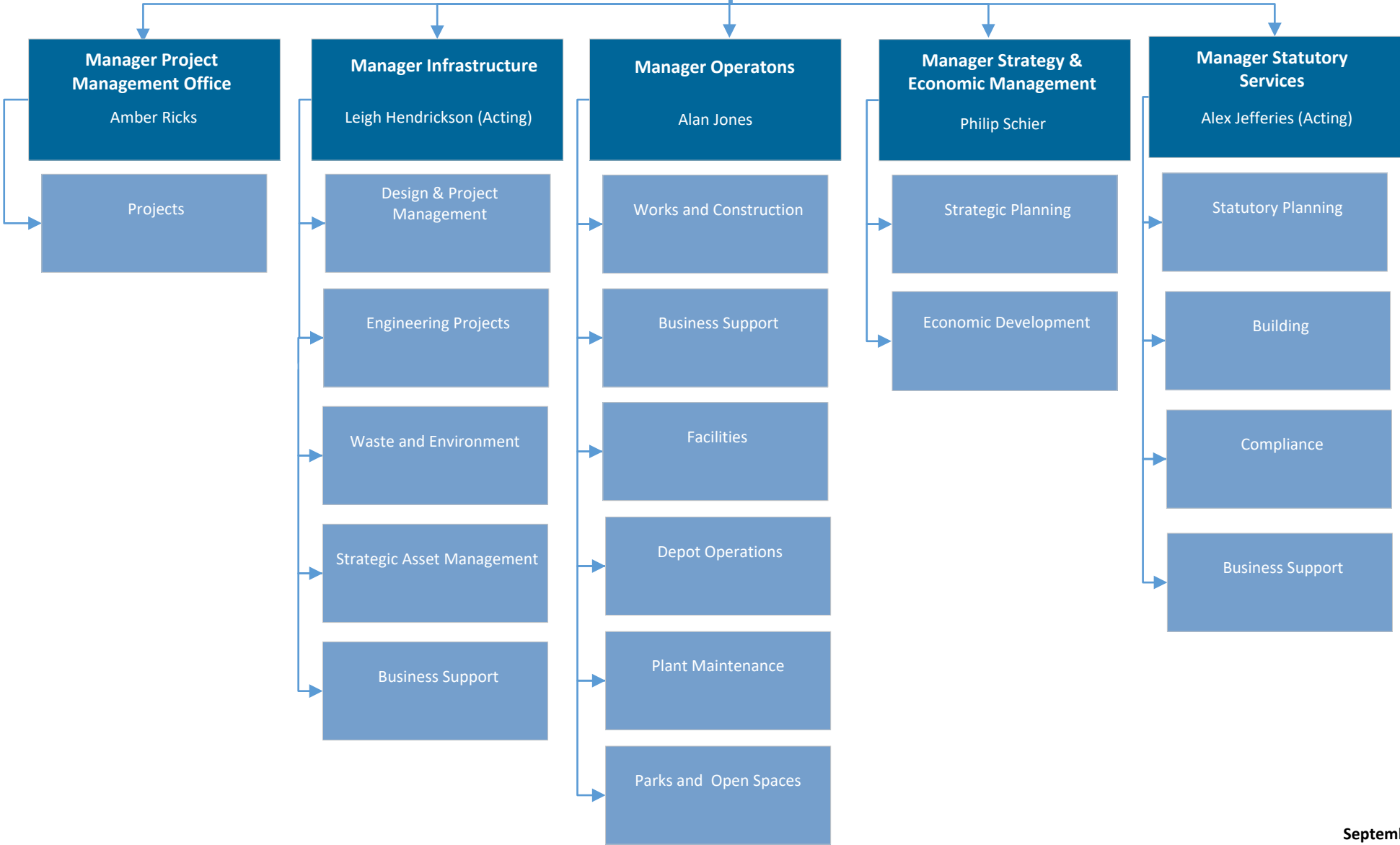


CHIEF EXECUTIVE OFFICE



**INFRASTRUCTURE ASSETS AND
PLANNING DIRECTORATE**

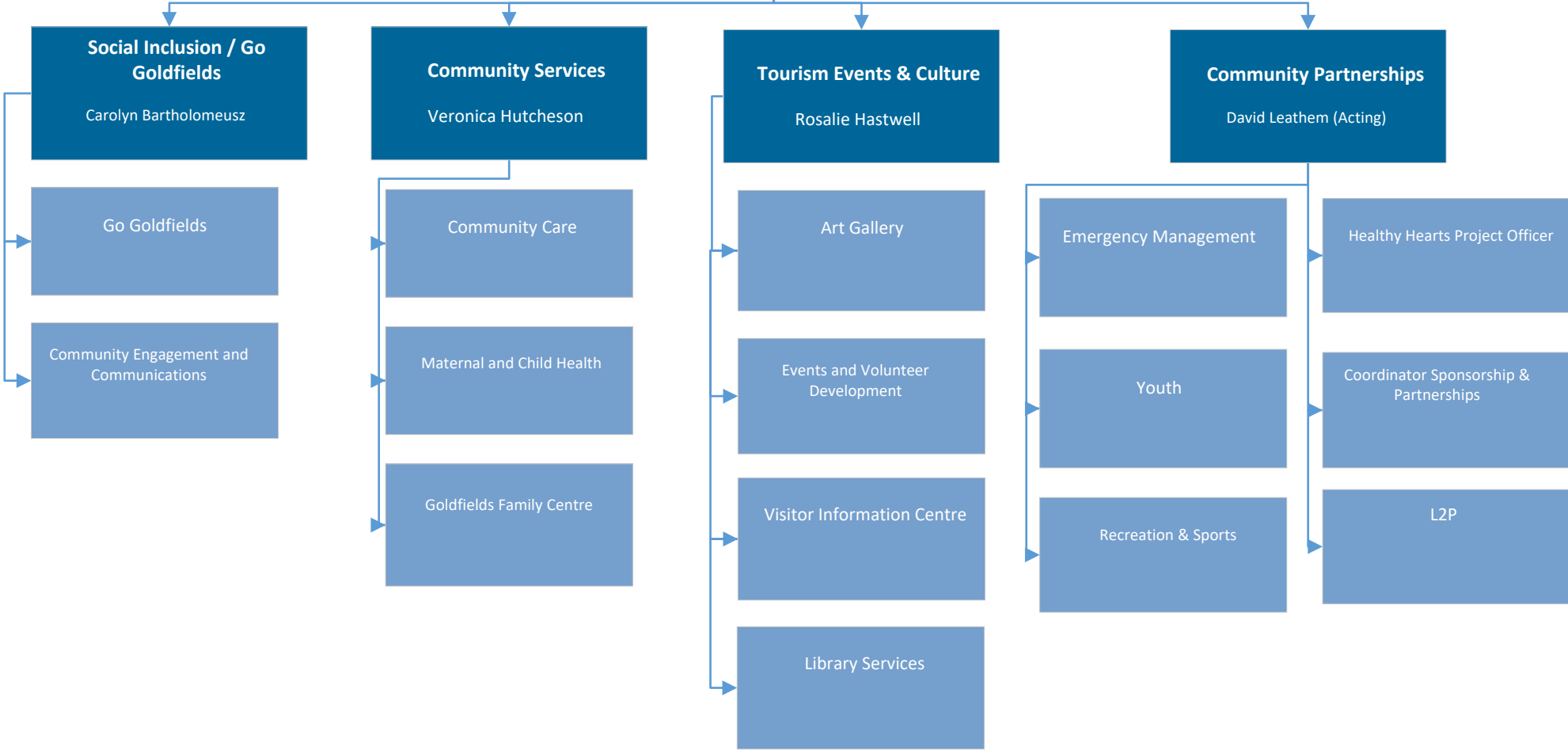
**General Manager
Infrastructure Assets and
Planning**
Matthew Irving



**COMMUNITY WELLBEING
DIRECTORATE**

**Community Wellbeing
Directorate**
Emma Little

EA to GM's



**CORPORATE PERFORMANCE
DIRECTORATE**

**General Manager
Corporate Performance
Mick Smith**

**Executive Assistant
Krystle Leist**

