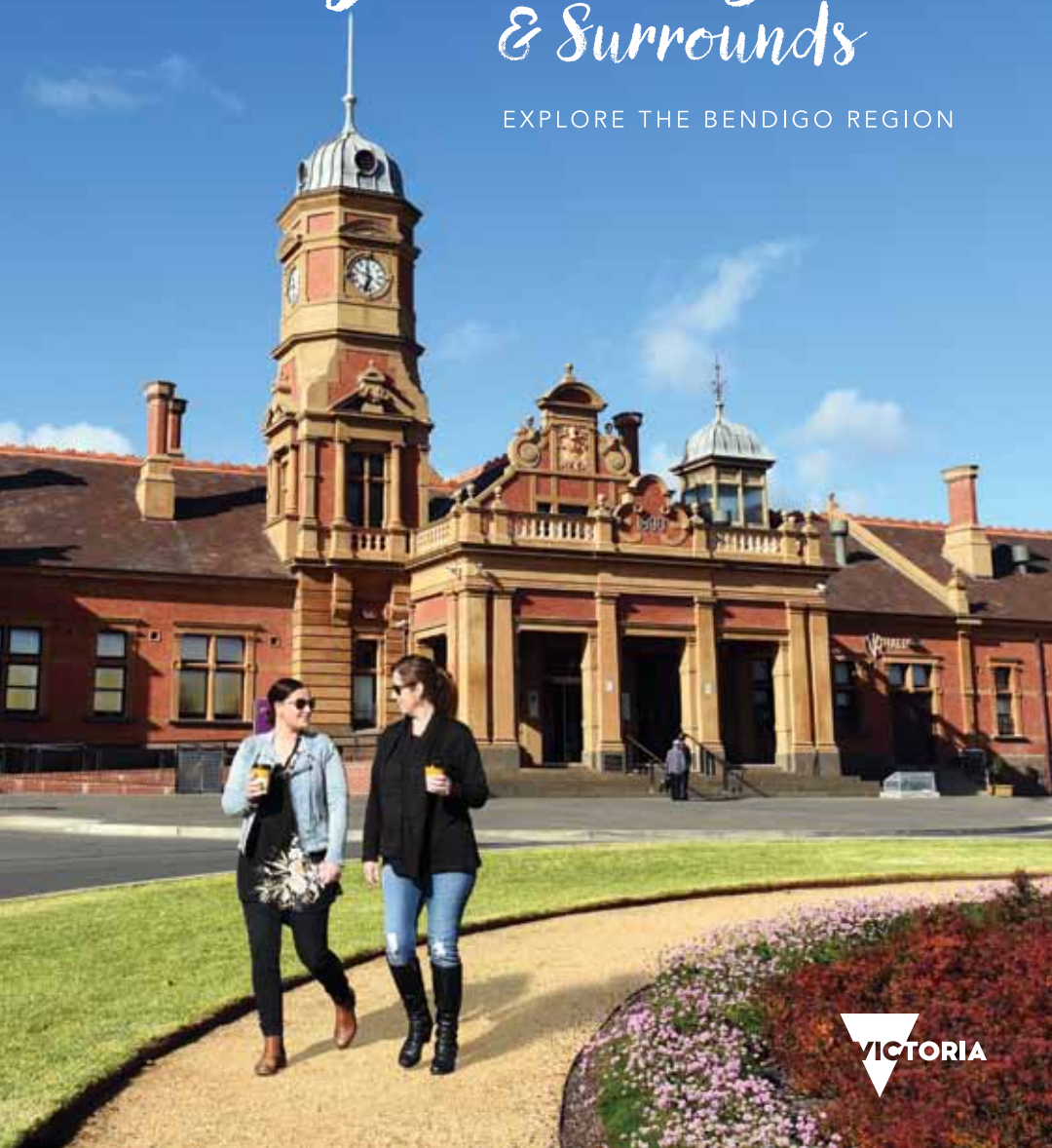


OFFICIAL VISITOR GUIDE

Maryborough & Surrounds

EXPLORE THE BENDIGO REGION



EXPERIENCE THE BEST OF MARYBOROUGH

BRISTOL HILL MOTOR INN & PEPPA'S RESTAURANT & BAR



- Maryborough, Victoria: two hours from Melbourne CBD; midway between Bendigo and Ballarat in the Central Goldfields.
- Comfortable, clean well appointed seventeen rooms, including spa rooms
- Licensed Restaurant and Bar located on premises, open Tuesday to Saturday
- Finest a-la-carte dining in the region, features all local wines
- Bristol Hill Motor Inn and Peppa's Restaurant and Bar - the complete package!

03 5461 3833
1 High St, Maryborough
info@bristolhill.com.au
www.bristolhill.com.au



Contents

Maryborough	3
Talbot	4
Dunolly	5
Carisbrook	6
Bealiba	7
Timor	8
Moliagul	9
Majorca	10
Events & festivals	11
See & do	14
Arts, culture & heritage	21
Food & wine	26
Retail	32
Accommodation	35
Come here to live	40
How to get here	42
Explore the region	43
Bendigo	45
Loddon Valley	46
Castlemaine	49
Goldfields Region Map	50
Maryborough Town Map	52
Talbot / Carisbrook Town Maps	54
Dunolly / Bealiba Town Maps	55
Important Information	56

Acknowledgement of Country

The Central Goldfields Shire Council would like to acknowledge that we are on Dja Dja Wurrung Country whose ancestors and their descendants are the traditional owners of this Country.

We acknowledge that they have been custodians for many centuries and continue to perform age old ceremonies of celebration, initiation and renewal. We acknowledge that their living culture and their unique role in the life of the region. ■

Image: Talbot Farmers Market.

Maryborough

Fortune seekers still flock to the Box-Ironbark forests around Maryborough, made famous by the likes of the Welcome Stranger. Weighing in at 69 kilograms, the world's largest nugget was found nearby, less than three centimetres beneath the ground. Today, treasure is likewise just below the elaborate surface of this gorgeous goldfields town. It's found in the grand architecture, the antique and collectable shops, the galleries and museums; all offering rich rewards for lovers of culture and heritage.

Creative heart

Visit the Central Goldfields Art Gallery in the historic former fire station. One of the region's prized cultural spaces, the gallery hosts a quality program of local and visiting artists' work.

Living history

See impressive 19th century architecture in McLandress Square's public buildings. The Italianate-style historic post office, town hall and court house are stunning works of some of the region's best architects. In contrast, the charming Worsley Cottage Museum depicts domestic life on the goldfields. The stone cottage houses the historical society, and an 1844 slab squatter's hut behind is believed to be the district's oldest building.

All for antiques

Bric-a-brac lovers and old wares collectors will lose time in the many quality boutiques that characterise Maryborough's shopping strips. The ornate Maryborough Railway station itself is the town's most prized antiquity and attraction. Inside there is a café/restaurant and gallery, where visitors can relax and enjoy historical ambiance.

Since 1891 travellers have gathered here; Maryborough being an important transport hub on the goldfields. Mark Twain remarked when visiting "You can put the whole population of Maryborough into it with a sofa a piece and have room for more". The station is reported to have the longest platform in country Victoria. No expense was spared in the station's construction. For example, the foyer's mosaic floor was laid by the same tiler who worked on Melbourne's Parliament House.

Wine and dine

Enjoy modern pub fare or a regional feast, with local produce featuring in cool cafés and providores throughout the town.

Get active

Jump on your bike for family-friendly rides or mountain biking through thick Box-Ironbark forest.

Maryborough's quiet country roads are a favourite for touring cyclists, too. Find the perfect picnic spot at Phillips Gardens or Goldfields Reservoir, or catch a local event or match from the historic grandstand of Princes Park. For a slower bush pace, try your hand at prospecting. There's a gold detecting supply store in Maryborough which still caters for the world's treasure hunters.

Events centre

The annual festivities start on New Year's Day with the historic Maryborough Highland Gathering, a colourful homage to bonny Scottish culture. See heritage buildings and gardens, street performance and exhibitions during Heritage Month. Catch the action of thousands of students competing in the award winning RACV Energy Breakthrough each November. ■





A fascinating gold rush town with picturesque winding streets of brick and bluestone, and cottage gardens.



Talbot

Talbot will provide you with plenty of surprises. This heritage village offers that unspoiled historic atmosphere, with many hidden activities to participate in including interesting shops and galleries, a nursery in the historic railway station, an antiquarian bookshop, and an observatory.

The Talbot Museum houses the Edwards collection of photographs, documents and letters, plus trade and lifestyle material from an early settler, watchmaker and jeweller, JB Edwards and his descendants. Adjoining is the Talbot Communications Museum which is home to historic radio, phone and TV equipment.

Talbot Provedore and Eatery celebrates locally sourced ingredients on their menus and stock a delicious range of regional products including a fine cellar of local wine, beer and cider. The Court House Hotel offers generous pub meals

and the coldest beer. Amherst Winery and Romantic Vineyard are just a short drive for a tasting of locally produced wines.

Talbot is home to one of Victoria's leading farmers markets on the third Sunday of every month, from 9am to 1pm. On market day over 100 stall holders set up in Talbot's historic precinct, along Scandinavian Crescent and surrounding streets. On offer is farm fresh organic fruit and vegetables, honey, wine, pasta, puddings, olives, organic meat, continental cakes, local flaxseed oil, homemade cheeses, live produce, plants and more. ■

For more visit: www.visittalbot.com.au



Nestled in the centre of Victoria's goldfields, between Box-Ironbark forest, farmland, vineyards and olive groves.

Dunolly

During the gold rush of the 1850s and 60s, more gold nuggets were discovered in Dunolly and the surrounding district than anywhere else in Australia. The area was renowned as the "Golden Triangle". The world's largest gold nugget, the 69 kilogram "Welcome Stranger", was found in nearby Moliagul. See a replica of this famous nugget at the Goldfields Historical and Arts Museum.

Today, Dunolly's attractive main street, Broadway, is lined with kurrajongs and gold rush architecture. Stroll along Broadway, call into the museum, step into the grand Town Hall and 19th century theatre, then enjoy a bite to eat from the award winning Dunolly Bakery. The bee stings are to die for!

Continue past the imposing Post Office before detouring to Market Street to visit Dunolly's Historic Precinct. The grand Court House, lock-

up and police stables, along with the quaint 1950s police station, are fully restored and open for visitors. Following here, pop into Alvah Art Gallery to view John Moir's extensive collection.

Dunolly is a perfect base from which to explore and get to know the hidden treasures of Central Victoria. It's an easy drive north to bushranger hide outs at Melville Caves, east to fishing on the Loddon River and kayaking at Laanecoorie, south to the Farmers' Market at Talbot or west to the Pyrenees wineries.

If cycling is for you, then get on your bike and ride the Dunolly Cycle Tracks: a series of signed forest roads and tracks of varying length between 14 and 47 kilometres. As well as Dunolly, routes pass through the old gold towns of Tarnagulla, Laanecoorie, Bealiba, Moliagul, Waanyarra, Betley and Goldsborough. ■



Carisbrook is the centre of a rich agricultural area.



Carisbrook

The town is proud of its many historic buildings, including the Masonic Lodge and the old log gaol. Built in 1852, the gaol retains its original interlocking and horizontally-laid log walls, but the shingle roof has been replaced by corrugated iron. You can get an understanding of how the local squatters lived from Junction Lodge, a two-storey, bluestone homestead, complete with stables, barn, blacksmith, kitchen and workers' quarters on Camp Street.

Indulge in a fresh pastry or sweet from the Carisbrook Bake House or good pub grub at the Britannia Hotel. For something a little quirky, Caroline's of Carisbrook offers an authentic experience, and you can explore the gift shop or indulge in a taste of old style confectionary.

A few kilometres south of town the Tullaroop Reservoir, and back toward Castlemaine, Cairn Curran Reservoir, offers camping and fishing opportunities. Many picnic spots beckon you to

relax with a local produce hamper or barbecue, like along Deep Creek at Bucknall Reserve where a quiet shady location can be enjoyed. Take a stroll along one of the Deep Creek walking tracks, where the landscape and bird life make excellent photographic opportunities.

Carisbrook is the birthplace of Tilly Aston, born in 1873. Tilly, despite the loss of her sight at an early age, became an accomplished writer, poet, musician and teacher. She initiated the Braille Library and the Association for the Advancement for the Blind in Victoria (now Vision Australia).

Carisbrook is home to the Maryborough Harness Racing Club which holds regular meets along with the Redwood Racing Carnival and Maryborough Gold Cup. A Self-Guided Walking Tour of Carisbrook is available from the Central Goldfields Visitor Information Centre. ■

Bealiba is a small country town with a history steeped in gold mining, cultivation, timber and farming.



Bealiba

Visitors can enjoy the peace of country living in this north-west gateway to the Gold Rush Centre of Victoria.

Gold was discovered at the foot of Mt Bealiba in 1856 and the subsequent rush saw the town rocket to a population peak of 12,000. It only lasted 18 months, after which land became available for selection and farming began.

Visit the beautifully restored Railway Station that proved a boon to local agriculture when it arrived from Dunolly in 1878. Grab a jar of some famous Cooper's Capers to take home your own little piece of the region.

Walking and driving tours of Bealiba are available at the Central Goldfields Visitor Information Centre. The walking tracks take you through the Red Ironbark forests of the neighbouring Bealiba Ranges and Tunstall State Forest.

Bealiba Reservoir is fantastic for a quiet spot of fishing with free camping and amenities. ■



Timor

Once a thriving gold town with a population in excess of 27,000, Timor had 38 hotels, three butcher shops, two banks, three bakeries, a police station and several lock-ups. The last hotel closed its doors in the 1960s.

Timor Gaol remains as a reminder of the large mining population which worked the mines in the area for nearly 30 years. The Timor Gaol is an early 1900s portable lock up, weighing over three tons, was originally next to the police station opposite the general store, and was used to temporarily house villains until they could be moved to a large penitentiary.

After the station closed in 1915 it was briefly used by the local undertaker to store coffins.

The Grand Duke Arch stands tall in the landscape. Between 1869 and 1896 this mine produced 216,054oz of gold worth £885,821 (about \$281 million in today's value). There were four shafts, the deepest descending 110m. At any one time 150 men were employed down the mine and at the shaft head. They all lived in cottages in town. ■



Moliagul

Moliagul has a timeless feel about it.

The Mt. Moliagul Hotel, stone Church of England, Mechanic Institute, State School and general store are a legacy of past wealth and prosperity. Moliagul is especially known for the 69 kg gold nugget discovered by John Deason and Richard Oates in 1869, famously known as the Welcome Stranger.

Gold you say? The Moliagul Historic Reserve 2km southwest of the township features a granite obelisk erected in 1897 to mark the 'Welcome Stranger' discovery site.

The 'Welcome Stranger Discovery Walk' takes you to the ruins of Deason's Hut, a puddling machine and through the remains of a Chinese Camp. A picnic ground with shelter, drinking water and barbecues are located near the car park and information board.

Mt. Moliagul dominates the surrounding plains. A gravel road winds up to a fire lookout where there are spectacular views.

Another notable son of Moliagul was the Reverend John Flynn born in 1880, the founder of the Flying Doctor service. A memorial is dedicated to him in the centre of town. ■



Majorca

Majorca is another bijou goldrush village, including interesting sites such as the restored Public Hall.

The white mullock heaps of the Hanoverian Deep Lead run across the paddocks just behind the town famous for its mines and hotels. Hundreds of wooden poppet heads once dotted the landscape. The historic Majorca Cemetery and close by Tullaroop Reservoir are worth a visit.

Majorca once had a public racecourse. The area is now a protected area managed by Parks Victoria and McCallums Creek Landcare. It is a peaceful place for a stroll amidst native grasses and protected Red Gums, some of which are around 500 years old. ■



Events & festivals

Maryborough and surrounds hosts events and festivals throughout the year celebrating the region's rich heritage and contemporary culture. Visitors from around the world can experience arts and culture, heritage, sports, beautiful gardens, food and wine and much more. ■

January

- New Year's Celebrations
- Maryborough Highland Gathering
- Summer in the Domain
- Australia Day Celebrations

March

- Talbot Annual Engine & Machinery Rally
- Annual Craft Show

April

- Relay for Life
- Australasian Cycling Championships (Easter weekend)
- ANZAC Day Celebrations

May

- Goldfields Heritage Festival

June

- Queens Birthday Golf Tournament
- Maryborough Gun Club Grand Prix
- The Dunolly Queen's Birthday Festival

August

- Redwood Harness Racing Carnival
- Maryborough Antique Bottle and Collectables Fair
- Bendigo Writers Festival
- Words in Winter

September

- Maryborough Wings and Wheels Festival

October

- Maryborough Gold Cup
- Central Goldfields Machinery Society Annual Historic Machinery Rally & Vintage Tractor Pull
- Central Goldfields Spring Fling
- Talbot Swap with the Lot
- Avoca Cup

November

- RACV Energy Breakthrough

December

- Summer in the Domain



RACV ENERGY BREAKTHROUGH
POWERED BY IMAGINATION

>> Come see Australia's biggest science, technology, engineering and maths event for school students >> Watch primary and secondary students from over 160 schools test their endurance in a series of track events >> Marvel at their talent in designing and building pushcarts and energy efficient vehicles >> Take a day trip on the train to Maryborough >> Visit the Energy Expo to learn more about 'greener living'

A PARTNERSHIP BETWEEN







WHEN: November, Annually
WHERE: Princes Park, Maryborough, Victoria
CONTACT:
 Martin Mark - PH: 03 5461 0621



RACVEB.COM

Talbot Farmers Market

TALBOT



The tiny town of Talbot boasts an authentic country farmers' market experience, with real livestock, real produce, real farmers and real community spirit.

Wander the beautiful heritage streets lined with market stalls and soak up the vibrant village atmosphere of the market – from 9am until 1pm on the third Sunday of every month.

Explore over 80 regional produce and artisan food stalls, listen out for live music, forage for a yummy breakfast and coffee, chat with farmers and don't forget to pick up a raffle ticket for your chance to win our famous Barrow Raffle. Plus browse the adjacent Town Hall Market for unexpected treasures.

Named in 'Australia's 10 best farmers markets' by *Australian Traveller* (January 2016), this is a market event not to be missed.

Talbot is just 10 minutes south of Maryborough.

Third Sunday every month, 9am–1pm.

**Heritage Precinct: Scandinavian Crescent
 & Camp Street, Talbot 3371**

03 5463 2001

www.talbotfarmersmarket.org.au



Goldfields Heritage Month

CENTRAL GOLDFIELDS

Goldfields
HERITAGE MONTH

Celebrating heritage experiences and stories from across the region, the Goldfields Heritage Month in May will showcase heritage sites, exhibitions, tours, performances and culinary delights, with over 50 events and activities on offer.

For further information:

03 5460 4511

visitorinfo@cgoldshire.vic.gov.au

www.goldfieldsheritage.com.au



Maryborough Harness Racing Club

MARYBOROUGH



- 28 race meetings each year ▪ Delicious home style cooked meals
- Pick last five Jackpot each meeting ▪ All facilities undercover
- TAB ▪ Sky Channel ▪ Well stocked bar.

Find us on [f](#)

106 Chaplins Road, Carisbrook 3464

Les Chapman – Secretary/Manager

03 5464 2451 / 0418 552 294

maryharn@bigpond.net.au

www.maryboroughharness.com.au

3 Day Seelie

Redwood Carnival

First weekend August

▪ **Maryborough Gold Cup**

Last Sunday in October



So many activities!
If you're looking to fill
in your time well and
entertain the family there
are plenty of options...

See & do

Bristol Hill Lookout

The Pioneer Memorial Tower (1933) was built during the Great Depression largely of material from the old Maryborough Gaol. It is situated at the edge of the Bristol Hill Reserve, (adjacent Miners Drive) and offers great views of the town. Bristol Hill (905m above sea-level) is based upon, and named after, Bristol Reef which was mined for gold from the late 1850s. There are old tailings to the west of the tower.

Cycling Tracks

Beginners and serious riders alike can travel at their own pace on the many cycling tracks available through the parks, forests and reserves offering spectacular scenery and riding conditions. **Cycle Central Goldfields Trails** and the **Dunolly Cycle Tracks** offer a series of signed forest roads and tracks varying in length between 11 to 80 kilometres. Call into the Central Goldfields Visitor Information Centre to collect maps for these trails.

Ride the new 115km (one way) **Ballarat-Maryborough Heritage Trail**, taking in the townships of Creswick, Clunes and Talbot. A country ride on quiet, unsealed roads, the route progresses through scenic, relatively flat country with views of rolling hills and farmland on existing public roads, or off-road paths.

Maryborough Railway Station

The historic railway station was built in 1890 and is reported to have the longest platform in country Victoria. Admire the highly polished timber ceiling and beautiful mosaic floor in the main entrance. Inside now is now home to the Railway Café and Tracks Bar, offering delicious food, quality coffee and the sweet treats are to die for! The northern end of the platform is home to the Museum of Australian History and Art Gallery showing a particular focus on indigenous and goldrush history and heritage.

McLandress Square

The town's civic centre is located on the site of one of the 19th century government camps in the area. Built in 19th century European style, the Italianate buildings face McLandress Square. The imposing Victorian post office was built in 1877 as a post office, courthouse and subtreasury. The town hall was built in 1887 and the courthouse later in 1892-93.

Prospecting

A popular pastime in the Central Goldfields. There are designated areas for gold prospecting, but don't forget to purchase your Miners' Right before you go. Maps are available at the Coiltek Gold Centre in Maryborough or Goldsearch Australia in Dunolly to show you where gold fossicking is permitted. Equipment is also available to hire or purchase to help find the treasurable metal.

Paddy's Ranges State Park and Maryborough Regional Park

Paddy's Ranges State Park (1,954 ha) and Maryborough Regional Park (270 ha) house a number of relics of the gold mining era. View the mullock heaps and remnants of a once-thriving Eucalyptus Distillery. The spring showing of Golden Wattle blossom amid the Box-Ironbark forest is a visual delight to discover. There are over 230 species of wildflowers and about 30 Orchid varieties. The natural features of the parks provide plenty of low-impact recreational opportunities for walking, bird watching or spotting wildflowers. The parks have numerous walking and cycling tracks, picnic areas and camping facilities with toilets, a water tank and fireplaces for winter. Be sure to take note of any fire restrictions. Fires must be confined to provided fireplaces. Maps are available at Central Goldfields Visitor Information Centre.



Sports and Leisure Activities

Maryborough and surrounds have outstanding sports and leisure facilities for visitors. The Maryborough Sports & Leisure Centre offers a 25 metre indoor heated pool, toddler's beach-front pool, spa, sauna, fully equipped gym and court sports. There is a 50m outdoor pool in Maryborough, a 25m outdoor pool at Talbot and a 25m outdoor pool in Dunolly available in the summer months for that refreshing dip.

There are golf courses in Maryborough, Talbot and Dunolly. All towns in the Central Goldfields Shire offer excellent bowling greens. Maryborough's lawn tennis courts are available for visitor use. There are also facilities for pétanque and croquet.

Maryborough Motorcycle Club also welcomes visitors to their track at Alma Recreation Reserve.

Reservoirs and Fishing

Local rivers and reservoirs attract many fishing and/or boating enthusiasts to this region. Locations where you can drop a line in and around Central Goldfields are the Goldfields Reservoir (located just south of Maryborough), Cairn

Curran Reservoir, Loddon River, Laanecoorie Reservoir, Tullaroop Reservoir and Avoca River. Pack a picnic basket and enjoy lunch at one of the reservoirs. Toilet facilities are available.

Carisbrook Log Gaol

The town's old log lock-up is thought to have been built around 1852 on the police paddock and moved to its present site in 1886. The walls are made of interlocking horizontally-laid logs. The shingle roof has been replaced with corrugated iron. The Carisbrook Gaol is open to visitors most days.

Bus Tours

Guided Bus Tours of Maryborough and region can be arranged (minimum of 12 people).

- 1 hour tour – \$5 per person
- Half day tour of Shire – \$15 per person
- Full day tour of Shire – \$30 per person

Bookings are essential and are required at least one week in advance. Your own bus is required. Please contact: Central Goldfields Visitor Information Centre for bookings on (03) 5460 4511.



Self-Drive Tours

All self-drive tours are available at the Central Goldfields Visitor Information Centre or for download from www.visitmaryborough.com.au/self-drive-tours

SELF-DRIVE TOUR 1

Explore the areas of Maryborough, Timor, Dunolly, Bealiba, Moliagul, Tarnagulla, Laanecoorie, Eddington and Betley on this beautiful full day tour. Approximately 120km.

SELF-DRIVE TOUR 2

Discover the areas of Maryborough, Carisbrook, Tullaroop Reservoir, Majorca, Dunach, Talbot, Amherst, Paddy's Ranges State Park and Adelaide Lead on this jam packed half day tour. Approximately 75km.

SELF-DRIVE TOUR 3

Get a taste of the Pyrenees Wine region by visiting the areas of Maryborough, Adelaide Lead, Bung Bong, Avoca, Percydale, Moonambel, Natte Yallock and Alma. Approximately 120km.

Nature Walks

Maryborough is surrounded by Box-Ironbark parks and forests including Paddys Ranges State Park, Maryborough Regional Park and Craigie State Forest. Walking is one of the best ways to see the township and the surrounding woodlands. The Maryborough Bush and Town Walk takes advantage of many of the natural and historical features while providing opportunities for the health benefits of walking.



The Maryborough Bush and Town Walk uses footpaths throughout the town, minor gravel roads and specifically constructed walking trails in the bush. The walk, which can be done in sections, is about 25 kilometres in total.

There are several sections or loops that can be done as individual walks. These include:

GOLDFIELDS RESERVOIR WALK

A loop around the picturesque Goldfields Reservoir – approx. 1.7kms.

PADDYS RANGES STATE PARK

Loop walk from the picnic area – approx 1.8kms.

CRAIGIE STATE FOREST

Battery Dam to Bull Gully rock wells – approx 2kms.

Picnic tables, parking areas, barbecues and other visitor facilities are available on the walks. Toilets are located at the Goldfields Reservoir, Paddys Ranges State Park picnic area and campground and at the Visitor Information Centre in Maryborough.

Maryborough Town Walk

If you are keen to explore all of Maryborough's heritage attractions and sites at your own pace by walking, there are self-guided town tour brochures available at the Central Goldfields Visitor Centre to help visitors on their way. ■

Coiltek Gold Centre

MARYBOROUGH 

The Coiltek Gold Centre, Maryborough, is situated in the famous Victorian Goldfields, the best nugget producing region in the world!

Our friendly staff are highly qualified and experienced in all aspects of the gold detector industry. We are the major outlet in Victoria for gold prospecting equipment. Enrol in our gold prospecting eco tour conducted by our professional instructors. These one day classes cater for beginners and experienced prospectors alike.


- New and used Minelab detectors
- Large selection of detector search coils
- Solar panels
- A wide range of goldfield maps and books
- Full range of Walco picks
- Electronic scales


Everything for the recreational and professional prospector.

6 Drive-In Court, Maryborough 3465

(on the Dunolly-Bendigo Road – 3km from traffic lights)

 03 5460 4700

 coiltek@nex.net.au

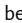
 www.maryboroughgoldcentre.com.au


Cycle Central Goldfields

MARYBOROUGH 

Experience the history of the Central Goldfields by cycling the eight tracks through the many parks, forests, reserves offering spectacular scenery and riding conditions.

All tracks differ in difficulty and distance.

Cycle maps are available at the Central Goldfields Visitor Centre or can be downloaded from:  www.visitmaryborough.com.au. Maps also incorporate the Dunolly Cycle Tracks offering a further seven trails.

 1800 356 511





Maryborough Sports & Leisure Centre

MARYBOROUGH 

- Heated indoor pools – 25m, program and toddlers, spa and sauna.
- Full gymnasium, fitness classes and basketball court:
Monday, Wednesday & Friday 6am–8pm, Tuesday & Thursday 9am–8pm, Weekends & Public Holidays 9am–12noon.
- Summer outdoor pools at Maryborough, Talbot and Dunolly:
Open 1pm–7pm.

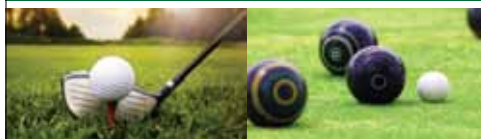
40 Gillies Street, Maryborough 3465

 03 5461 4300

 www.mslc.com.au

Maryborough Golf Club

EAT • DRINK • PLAY



**EVERY TEAM.
EVERY GAME
LIVE. LIVE HERE.**



The Club Bistro – Open 7 days

Lunch: 12pm – 2pm

Dinner: 6pm – 8pm

Golf 18 holes, fully grassed course

Bowl Two grass greens

**Don't forget to take
advantage of our
courtesy bus.**



Thursday, Friday and Saturday from 4.30pm

Phone: 0474 963 238



Park Road, Maryborough

Phone: **03 5460 4900**

www.maryboroughgolfclub.com.au



is now available for
Members and Guests





For the creative at heart...
Maryborough is building
a strong hub for arts,
culture and heritage...
and you'll be keen
to be a part of it...

Arts, culture & heritage

Central Goldfields Art Gallery

Situated in the picturesque historic fire station built in 1861, this unique building now houses the Central Goldfields Art Gallery. The Victorian era fire station is an exceptional landmark of Maryborough. The Gallery features a diverse program of regularly changing exhibitions; showcasing artists from the Goldfields region, plus community and travelling exhibitions. A selection of works from the Gallery's Collection is also exhibited. Open Thursday–Sunday 10am–4pm.

Possum Gully Fine Arts

The Gallery specialises in works on paper including drawing, painting and printmaking, as well as glass and ceramic art, textiles and garden sculpture. Artists' works are local, national and international and include some notable Australian names such as Dean Bowen. Open Saturday and Sunday, public holidays 11am–5pm and by appointment.

Alvah Art Gallery

Be inspired by local Dunolly artist John Moir. John's work includes works in oil painting, water colour, pastels, pen and pencil. Alvah Art Gallery is for folk to call in for a chat and a look at what is on offer. You might like to have a look at John's restored vintage and veteran cars while you're visiting the gallery. The Gallery is open from Monday–Saturday 10am–5pm. Sunday varies but generally open from 11.30am to 5pm.

Worsley Cottage Museum

A bluestone building that became the home of the Maryborough Midlands Historical Society in 1976 is today a wonderful museum to visit. It is furnished with period pieces and has a huge collection of goldfields maps, photographs and mining relics on display. In the backyard is a Squatter's Slab Hut Circa 1844, the oldest known building in the district, with shingle roof & rammed earth floor lined with hessian & canvas.



Museum of Australian History and Art Gallery

Located at the Northern end of the Maryborough Railway Station. The Museum takes you on a journey through Australian History with a particular focus on indigenous and gold rush history and heritage. An experience that is unique in the region. Open: Thursday–Sunday 10am–4pm and public holidays.

Talbot Arts and Communications Museum

Opened in 1984 in the former Primitive Methodist Church and later clothing factory, Talbot Museum houses the Edwards Collection of photographs, documents and letters, plus trade and lifestyle material from an early settler, watchmaker and jeweller, JB Edwards, and his descendants.

Goldfields Museum, Dunolly

Goldfields Museum is home to many relics and historical displays. It hosts a large collection of WWI and WWII firearms, large

replica collections of locally found gold nuggets, including the 'Welcome Stranger' and displays and information on the township of Dunolly and its residents.

Dunolly Historic Precinct

The Dunolly Historic Precinct provides some insight into the practice of law and justice over the past 150 years.

Proclaimed as a Borough in 1858, the Town Hall in Market Street was built in 1863. In 1884 the centre of local government in Dunolly moved to Broadway and the Court House became the Town Hall. The Court House continued to operate for a century.

Built alongside the Town Hall in the 1860s were the police station, police residence, brick lock up, Police Court and stables. In the 1860s policing was largely done on horseback, so the stables were equally important as the station. The cold and dark cells inside the lock up are not a place a prisoner would want to remain for any length of time.



Travelling forward in time the small timber police station was built in 1958 and was a structure commonly found in small rural towns in the 1950s.

The Aboriginal Shelter Tree

A rare and unique tree, the red river gum (*Eucalyptus Camaldulensis*) is believed to be about 700 years old. The girth of the tree is 15m and the hollowed-out centre was used by the Dja Dja Wurrung people for shelter. It was a small seedling at around the same time as Europe was decimated by the Black Plague. This site is classified by the National Trust.

Aboriginal Wells

To the south of Maryborough are four rock wells dug into sandstone by the Dja Dja Wurrung people prior to European settlement. The holding capacity of the wells is 168 litres and regarded as the best example of such wells in Victoria. Aborigines relied on these wells for drinking water when passing through the region. Directions can be obtained from the Central Goldfields Visitor Centre.

Quartz Mountain, Amherst

Quartz Mountain is a massive quartz outcrop situated between Amherst and Lillicur. Pure quartz outcrops in immense masses stand over six metres above the level of the adjoining hill surface. In one section a magnificent 40 tonne boulder balances precariously on top of the reef, which extends 0.8km in a northerly direction from the main outcrop. It is the biggest quartz reef remaining in Victoria. The surrounding area is rich in wildflowers, with over 200 species and approximately 30 species of orchids. The dominant Eucalyptus trees are Red Ironbark, Grey Box and Yellow Gum.

Moliagul Historical Reserve

2km south-west of the township features a granite obelisk erected in 1897 to mark the 'Welcome Stranger' discovery site. The nugget was found in 1869 and was the largest specimen of reef gold ever found; it weighed an enormous 2530 ounces (69kgs) and was valued at £9,534. ■

CENTRAL GOLDFIELDS ART GALLERY

The Central Goldfields Art Gallery is situated in the picturesque old fire station, built in 1861.

The gallery's changing exhibition program showcases local and regional artists, and includes diverse touring exhibitions. Community engagement is supported with an annual community art and craft exhibition and local schools' VCE art and design exhibition.

A selection of artwork from the Gallery Collection is exhibited in the Casey Room. Included are several donations of paintings and sculptures by Arthur Boyd, Ray Crooke and Dean Bowen.

Admission to the gallery is free and a donation is gratefully accepted. Tour groups are welcome all week. Bookings essential.

Old Fire Station

Neill Street
Maryborough, Victoria

Ph: 03 5460 4588

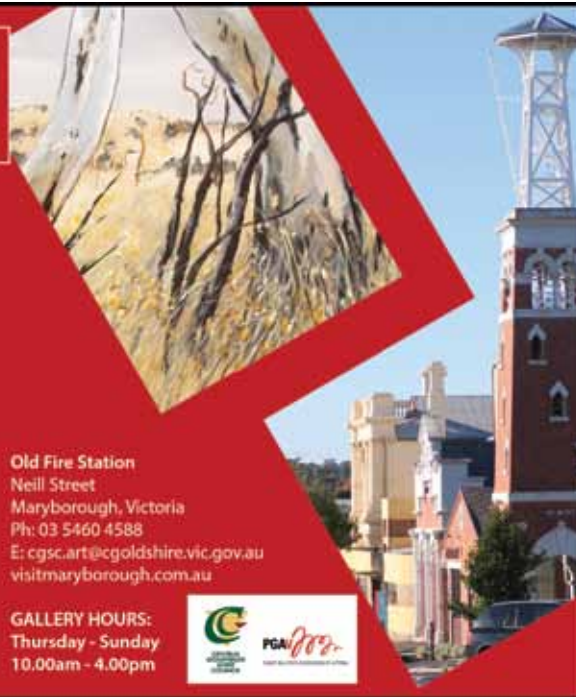
E: cgsc.art@cgoldshire.vic.gov.au

visitmaryborough.com.au

GALLERY HOURS:

Thursday - Sunday

10.00am - 4.00pm



Museum of Australian History & Art Gallery

Displays of Aboriginal history, convict history, Victorian women's fashion, mining, Chinese mining & shearing.

Open Thursday – Sunday 10am–4pm or by booking.

Admission \$6 Adults & \$3 for Children (NO EFT).

Located at the Maryborough Railway Station.

Phone: 0477 589 692

Email: keithtrudgeon@hotmail.com

Find us on

Alvah Art Gallery

DUNOLLY

Variety of art, district tours and information.
Old cars to see – all in parklike setting.
Bus tours catered for.

114 Dunolly-Bridgewater Road,
Dunolly 3472

0439 029 989

emu28@bigpond.com



Dunolly Historic Precinct

DUNOLLY

Experience law and justice from the 1860s. Sit on the judge's bench, be locked in the dark cells or be a prisoner in the dock – it's all possible in Dunolly's grand Court House. Then travel forward in time to a working 1950s police station. **Saturday 11am–3pm, other times by arrangement.**

Cnr Market Street & Bull Street,
Dunolly 3472

0438 168 634

dunollyhistoricprecinct.com.au



Amarylia Studio

DUNOLLY

(Incorporating Blind Dog Pottery)

Small batch ceramics, mosaic, sculpture, classes, workshops, school and community art projects. Email / call / text Danielle to arrange an appointment.



6 Betley Road, Dunolly 3472

0422 515 585

amarylia.studio@gmail.com

blinndogpottery@gmail.com



Talbot Heritage Station

TALBOT

■ Rail Museum ■ Books ■ Collectables
■ Nursery ■ Framing.
Early till late – 7 days.
Est. 1873.



Worsley Cottage Complex M'BOURGH

Opening Hours: Tuesdays & Thursday 10am–12pm,
Sunday 2pm–4pm. Other times by appointment.
Accredited Museum.
Home of Maryborough Midlands Historical Society Inc.

3 Palmerston Street,
Maryborough 3465

03 5461 1258

worscott@bigpond.com

Facebook: Maryborough
Midlands Historical Society Inc.





Enjoy local cuisine created with fresh local produce, and a variety of local and regional wines and craft beer/cider.



Food & wine

Delicious cuisine, country style meals and great service are offered at restaurants, cafés, provedores and local historic pubs. Alfresco dining or light lunches are readily available for any visitor or local alike to indulge in. Try a glass or two of great local wine or try a locally brewed ale.

Be tempted by freshly baked loaves, cakes and pastries and some of our regions award winning bakeries. If you're planning a day of hectic activity, grab a delicious wholesome breakfast before you go.

Visit specialty producers including Stoney Creek Oils, Dunluce Lamb, or Coopers Capers in Bealiba. Local butcheries produce some of the finest cut meats sourced in the region.

Some of the finest table wines in Australia come from the Goldfields Wine Region of Victoria, situated next door to the Pyrenees Wine Region, making a great day out for anyone keen to have a little sip.

The Talbot Farmers' Market, held on the third Sunday of every month from 9am to 1pm, is one of the most popular in Victoria. Stroll around the vibrant atmosphere and take your pick of the freshest seasonal produce, local wine, fine delicacies, handmade cheeses and freshly baked breads. The market offers a chance to buy organic fruit and vegetables picked that morning. A food fossickers delight! ■





MARYBOROUGH HIGHLAND SOCIETY

Your total entertainment venue!

FINALIST - 2016 REGIONAL CLUB OF THE YEAR



*Experience great
specials in our
Family friendly
Pipes Bistro!*

OPEN 7 DAYS

Lunch 12 noon - 2 pm
Dinner 6 pm - 8 pm



- Fox Sports • Keno • Tab • Club Mix Rewards
- Beer Garden • Pipes Bistro • Happy Hour
- Courtesy Bus (Fri – Sun) • Bowls Facilities
- Functions • Weddings . . . and more!



Maryborough Highland Society

35 High Street, Maryborough | Phone 5461 1480

www.highlandsociety.com.au



BULL & MOUTH HOTEL

Delicious food and local wines.
Two bars/café, conference and
function rooms. **Open 7 days.**

119 High Street,
Maryborough 3465
Phone: **03 54 613 636**

Dunolly Bakery

DUNOLLY



The **Dunolly Bakery** was purchased by the Stuart family, in 1987 and has undergone several major changes and growth throughout its 24 years in operation. The Bakery now boasts a large plant and production area with modern equipment.

The bakery produces a large range of breads, cakes and pastries baked fresh daily.

The building originally built in the 1850s has a well-laid-out and presented customer service area that serves traditional country style portions in our country style bakery. Providing friendly/ family service and a warm atmosphere, you are welcome to dine in at our heritage period restored café area or outdoors in our shaded sidewalk. We have great coffee, great choices of bakery food and a full bakery/café/ historic town experience.

The Dunolly Bakery was the 2007 Central Goldfields Shire business of the year and a customer service award winner.

For your convenience we have restrooms, eftpos and we are open 7 days a week. The Dunolly Bakery is a great place to visit when staying in the Central Goldfields of Victoria.

FREE GIFT

When you visit the Dunolly Bakery simply present this coupon to one of our friendly staff to receive a **FREE COFFEE SCROLL** with any bakery purchase (one coupon per person per visit).

"THE GOLDFIELDS' FINEST BAKERY"

97 Broadway, Dunolly 3472

☎ 03 5468 1331

✉ info@dunollybakery.com.au

🌐 www.dunollybakery.com.au



RAILWAY CAFE & TRACKS BAR

CAFE - BAR - RESTAURANT
ART GALLERY - WEDDING & EVENTS

Located in the iconic Maryborough Railway Station, Railway Cafe & Tracks Bar is the perfect location for a day out offering quality food & service.

Open Wednesday to Monday 10am to 4pm
Restaurant open Thursday to Saturday 6pm till late

29 Station Street Maryborough Vic 3465
(03) 54 61 1362

www.railwaycafe.com.au
www.facebook.com/railwaycafetracksbar

tripadvisor

Maryborough Seafood Bar

MARYBOROUGH



- Quality meals
- Homemade hamburgers & souvlakis
- Fish cut and cleaned on premises
- Affordable prices
- Family packs
- Seafood & salads
- Friendly service

Ask about our Value Deals

174 High Street, Maryborough 3465
(03) 5461 1809

Parkview Bakery

MARYBOROUGH / ST. ARNAUD



Central Goldfields award winning bakery.
Sit down.
Open 7 days.
Follow us on Instagram and Facebook.

21 Tuaggra Street, Maryborough 3465
(03) 5461 4655

55 Napier Street, St. Arnaud 3478
(03) 5495 1395

✉ pvb1@westnet.com.au



Stoney Creek Oil Products – 100% Australian owned, Australian grown

TALBOT



Since 1992, Stoney Creek has produced Australia's premium range of cold-pressed, certified organic Flaxseed products. Flaxseed Oil is rich in Omega 3 (60% as ALA), whilst Flaxseed Meal and Flour are high in protein and essential dietary fibre. Visit our factory door for discount sales. Monday–Friday 8am–4.30pm (or weekends by appointment).

145 Davies Road, Talbot 3371 (turn off highway at Old Ballarat Road, 2km south of Talbot)
(03) 1300 352 948 / (03) 5463 2553
✉ www.stoneycreekoil.com.au



Talbot Provedore and Eatery

TALBOT



A taste of the region. Set in a beautiful heritage village, we showcase the best seasonal produce on the menu and in the Provedore, deli and wine store. Welcoming service, fantastic coffee, all-day meals and the finest regional wines to enjoy in or take home.

Thursday to Sunday 10am–5pm
Saturday evening dinner from 6pm

42 Scandinavian Crescent, Talbot 3371
(03) 5463 2008
✉ www.talbotprovedore.com.au



Café One Ninety

MARYBOROUGH

- Great coffee
- Fully licenced
- Breakfast and lunch
- Great home style menu

Find us on 

Catering for special occasions and private functions.

190 High Street,
Maryborough 3465
(03) 5460 4033
✉ cafeoneninety@hotmail.com



Class Kitchen Bakery

MARYBOROUGH

Monday to Friday 6am to 3pm.
Saturday 6am to 12.30pm.

Large range of freshly baked pies, pasties, cakes and slices.
Lavazza coffee and cold drinks.

83 Nolan Street,
Maryborough 3465
(03) 5460 4043
(03) 5437 105 419



Railway Hotel Dunolly

DUNOLLY

Bar open everyday.
Meals Thursday–Sunday.
Lunch 12–2pm and dinner 6–8pm.
Happy hour Fridays 5–7pm. Free meat trays to be won.
For all your bookings and private functions.

101 Broadway, Dunolly 3472
(03) 5468 1013



Romantic Vineyard

AMHERST

Accommodation ♥ Cellar Door ♥ Restaurant
Boutique beer and wine.
Eclectic cuisine.
Open daily, call ahead.

Find us on 

280 Lillcur Road, Amherst 3371
Pyrenees Wine Region
(03) 5463 2468 / (0407) 632 468
✉ www.romanticvineyard.com





Maryborough and surrounds has established itself as a major retail centre for central Victoria.

Retail

High Street in Maryborough is full of variety and temptation; beautiful classy homewares, the latest fashion and accessories, cosmetic and jewellery options, plus a selection of stylish shoes.

In Nolan Street, you can treat yourself to a massage, fossick the quirky vintage, retro, antique and collectable stores, or once again find the fashion stores irresistible.

For the DIY enthusiast, there is a large selection of craft and discount stores for all your supplies.

Dunolly, Talbot and Carisbrook are filled with boutique shopping opportunities. Old fashioned lolly shops, gourmet food suppliers and specialty boutiques, antiques and collectables are just some of what you'll discover when you stroll along the main streets of each town.

Farmers markets and craft markets are on almost every weekend around Central Goldfields Shire and provide visitors with the opportunity to purchase the finest local produce. ■

Maryborough Travel & Cruise

MARYBOROUGH



Maryborough Travel & Cruise is a locally owned and operated agency which has been servicing the Maryborough and district area for over 30 years. We pride ourselves on good, old fashioned customer service for all your domestic and international travel needs.

156 High Street, Maryborough 3465
 ☎ 03 5460 5101
 ✉ sales@maryboroughtravel.com.au
 🌐 www.maryboroughtravel.com.au

MARYBOROUGH
 TRAVEL & CRUISE
 f i



Specialising in bra fittings
Lingerie, Leisurewear,
After 5, Handbags,
Jewellery, Hosiery



Boo Radley

Family owned and operated store
catering for ladies of all ages



CORNER OF ALMA ST & NOLAN ST, MARYBOROUGH • PH: 03 5461 1616

Visitors to the CGS shire please present this ad to receive 10% off the RRP on any items, store wide.



Cara Lou Lou

MARYBOROUGH

- DMC threads & stitcheries
- Dress & craft fabric
- Tilda fabric
- Haberdashery
- Wool & accessories

144 High Street,
 Maryborough 3465
 ☎ 03 5461 4692

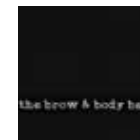


The Brow & Body Bar

MARYBOROUGH

Welcoming all existing and new clients to the latest beauty arrival in Maryborough.
 All women's and men's waxing, tinting, tanning needs.
 Lash lifting.
 Manicure and pedicures.

68 Alma St, Maryborough 3465
 ☎ 0418 150 590
 ✉ thebrowandbodybar.gettimely.com



Eileen's Frock Salon

MARYBOROUGH

Ladies Fashion
Day, casual, after five and lingerie.

79 Nolan Street,
 Maryborough 3465
 ☎ 03 5461 2031 / 0418 301 917
 ✉ margaretlovett@me.com



Maryborough Lions Club Book Shop



Over 10,000 books in stock at any one time.
 Collectors books, records, CDs and cassettes.
 Most books are \$1 each. Others at marked prices.
 Open Monday–Friday 9am–4pm; Saturday 9am–1pm.

Find us on f

124 High Street,
 Maryborough 3465
 ☎ 0484 764 578



Prime's Discount Store MARYBOROUGH

- Paint
- Tiles
- Bathroom products
- Furniture.

70–76 Nolan Street,
Maryborough 3465
03 5461 1556



Maryborough and surrounds offers an excellent range of accommodation options catering for all needs and wants.



Accommodation

All offering warm hospitality, there are boutique bed and breakfasts, country houses in elegant gardens, historic cottages, mud brick or stone cottages, classic guest houses, stately homes, farm stays, heritage hotels and luxury getaways.

Choose self-contained and group accommodation in bushland settings, or with panoramic views of the Pyrenees Ranges. Stay at motels in the centre of town, or just a short stroll

away there are caravan parks with cabins, en-suites and plenty of sites. Maryborough and Dunolly caravan parks are situated on picturesque lakeside settings. You can even stay at a charming 1854 fully restored shearer's hut and bluestone cottage situated on a quiet sheep and cattle property.

Nothing is too far away from the attractions, so staying overnight in any of the villages provides endless opportunities. ■

Laanecoorie

LAKE SIDE PARK

on the Loddon River



PARK FEATURES

- Lake Frontage • Natural Bush Setting • Camp fires allowed
- Dog Friendly – sites only • BBQ area and camp kitchen
- Adventure playground and recreation room
- Group bookings welcome with various catering options
- Tennis, basketball, soccer and beach volleyball courts
- Activities include fishing, swimming, skiing, bushwalking, cycling, and gold prospecting

ACCOMMODATION OPTIONS

- Air Conditioned / Ensuite Cabins
- Lakeview Cabins • Four Bedroom House
- Powered and Unpowered Sites
- Long Term Holiday Sites



Your Hosts: Duncan and Paula Jones
58 Brownbills Road, Laanecoore Victoria 3463
Phone (03) 5435 7303 Email info@laanecoore.com.au
www.laanecoore.com.au

Scan this code with your smartphone to visit our website





LOCHINVER FARM

homestead & cottages







Lochinver
245 Baringhup Road
Carisbrook Victoria 3464

 03 5464 2356
info@lochinverfarm.com.au
www.lochinverfarm.com.au

Lochinver Farm is a beautiful historic property at Carisbrook near Maldon and Maryborough, just 2 hours from Melbourne. The C19th Homestead and Cottages are perfect for couples, families and small to large groups of up to 24 or more. Suits both social and business guests. Set on 1000 acres of peaceful farmland on picturesque Tullaroop Creek. Self-contained or B & B, Wi-Fi, pet friendly, camping options.





Maryborough Caravan Park

7-9 Holyrood Street Maryborough Vic 3465
Ph: 03 5460 4848

Dogs Welcome



FREE Wi-Fi
FOR GUESTS

- PET Friendly Sites
- Powered & Unpowered Sites
- New Amenities with Individual Heated Bathrooms
- New Large Heated/Air-Conditioned Camp Kitchen
- Walking Distance to Town Centre
- Fully Self Contained Cabins Ranging From Budget Open Plan to 2 Bedroom Lakeview Deluxe Villa (some pet friendly)
- Playground
- Situated on the banks of Lake Victoria

Groups are welcome and well catered for at the Maryborough Caravan Park!

www.maryboroughcaravanpark.com.au



Wattle Grove MOTEL & VILLA

Set on one hectare in quiet area in Maryborough

The Motel - affordable accommodation

- Single, queen, triple and family rooms
- All with TV, heating, aircon, microwave, fridge and toaster
- Well appointed ensuites.

The Villa - a home away from home

- Fully self contained high quality accommodation
- Includes well equipped kitchen/dining, laundry and private courtyard.
- Three bedrooms, Sleeps 7. Ideal for groups.

Undercover BBQ facilities with sink available for our guests

Weekly Rates: Tradies, Prospectors, Car Clubs, Senior and Group packages available.
65 Derby Rd Maryborough (Maryborough-Ballarat Rd) 3465
Ph. 03 5461 1877 Mobile 0427 687256
stay@wattlegrovemotel.net.au www.wattlegrovemotel.net.au




Dunolly Golden Triangle Motel

DUNOLLY



We are a rural motel in the heart of Victoria's historic gold and grain country. Offering local information, free WiFi, off-street parking, a camp kitchen with BBQ utilities, an open fireplace, swimming pool with full amenities, old fashioned service, light breakfasts available, fresh linen, air conditioned, clean accommodation.



1846 Maryborough Road, Dunolly 3472

☎ 03 5468 1166

✉ info@dunollygoldentrianglemotel.com.au

🌐 www.dunollygoldentrianglemotel.com.au



Golden Country Motel & Caravan Park

MARYBOROUGH



Relax, unwind and rejuvenate. Enjoy the quiet friendly atmosphere and comfort of Golden Country. The choice of motel rooms, cabins, Luxury Villa's and en suite sites. Lovely shady areas to relax, free barbecue facilities, a quiet room to read or meditate, plus a heated swimming pool for your enjoyment.

134 Park Road, Maryborough 3465

☎ 03 5461 1101

✉ gcc@goldencountry.com.au

🌐 www.goldencountry.com.au

Highlander Haven Motel

MARYBOROUGH



Affordable accommodation for all travellers. Staying one night or many, we have a variety of special offers to cater for your individual needs, personal or corporate. Clean, comfortable rooms in peaceful and spacious surroundings 1km from the city centre. Single, twin and family rooms with complimentary light breakfast.

72 Sutton Road, Maryborough 3465

☎ 03 5460 4122

✉ reception@highlanderhavenmotel.com.au

🌐 www.highlanderhavenmotel.com.au



Bristol House Accommodation



Unit: Modern self-contained two bedrooms, sleeps 5+, separate toilet and bathroom, laundry, large lounge, TV/DVD. Kitchen and private courtyard. Air conditioning and gas heating.

Other accommodation areas available.

70 Inkerman Street, Maryborough 3465

☎ 03 5462 2331 / 0429 431 216

🌐 www.rooral.com.au



Court House Hotel

TALBOT

Great hearty pub meals. Counter meals and lunches \$10. Meals available: Lunch Thursday–Sunday; Dinner Tuesday–Saturday. Roast lunch only on Sunday with unlimited vegetables—\$16. Cheapest & coldest beer between Bendigo and Ballarat... Six motel units available. From \$65 per double per night.

12 Camp Street, Talbot 3371

☎ 03 5463 2204



Dunolly Caravan Park

DUNOLLY

- Prospectors discounts apply
- Lakeside setting
- 40 powered sites
- Cabins and vans
- Camping sites available.

46 Desmond Street, Dunolly 3472

Hosts: Peter & Caryl McFadden

☎ 03 5468 1262

✉ dunollycp@yahoo.com.au

🌐 www.dunollycaravanpark.com.au



Moonlight Inn

MARYBOROUGH

- Set on 10 acres of gardens and bushland.
- Excellent for groups – up to 10 people
- Weddings and functions
- Large lounge / function room
- Huge Chef's kitchen – self-catering allowed
- Affordable accommodation
- Continental breakfast available.

8 Trickeys Road, Maryborough 3465

☎ 03 5461 2413





Located in the geographical centre of Victoria and nestled amongst state forest, the Central Goldfields Shire covers some 1550 square kilometres.



Come here to live

Maryborough is the shire's major business centre with a population of around 8000 people. Other smaller towns in the Shire include Bealiba, Carisbrook, Dunolly, Majorca, Moliagul, Talbot, Bowenvale/Timor and Daisy Hill.

The towns and rural districts surrounding these centres are famous for their colonial architecture and significant agricultural industries.

The Central Goldfields has a unique combination of natural qualities; manufacturing, retail and agricultural sectors; historical significance, and is strategically placed in terms of economic and tourism potential.

Quality health and education services are at your fingertips along with developing connection and transport services between Melbourne and the major regional cities of Bendigo and Ballarat.

The Shire is currently experiencing significant economic growth with key infrastructure projects on the go, retail developments on the way and major residential developments reaching fruition. Life in the Central Goldfields Shire offers both the peace and tranquillity of rural life and the convenience of city amenities.

Central Goldfields certainly is a great place to live, work, retire and invest. ■



Imagine your new home

Where you can **choose to work** if you wish or **enjoy leisure time** in a "pocket community" of 50 villas set around spacious grounds amongst award winning gardens, and have the ability to bring your pets with you. This purpose designed village is reserved for the over 55s.

Our vibrant, active, supportive village has both privately fenced back yards and outdoor living areas where you can be as private and independent as you wish or become as involved in village life as you want. The choice is yours.

The word '**Retirement**' is not used here, because those that are not working are just as busy engaging with their many interests and activities within the village or as part of the wider community. Family members and friends are as welcome to join in as you are.

Life at the School House Village

- 24 hr access to a magnificent heritage listed School House for all your recreational needs and companionship.
- Spacious villas. Designed to meet your needs with privacy and independence in mind but also having the possibility to "Age in Place"
- Easy access to all services
- Facilitated **Flexi Care Support** if the need arises as you get older.
- **24 hour, 7 days a week emergency assistance** via the push of a button in each home.
- **Secure** accommodation protected by the Retirement Villages Act **not** caravan park legislation (Residential Tenancies Act) (such as Manufactured house villages)
- You will not feel lost within a very large village where you may not recognise the person you are passing on a path.
- Availability to choose a **2 BR plus study** on one of the floor plans.



Come and see for yourself by taking an arranged a guided tour and imagine how content and secure your new life will be in this small, personal community of 50 units.



60-62 Gillies Street,
Maryborough

N°2828
SCHOOL HOUSE VILLAGE
at Maryborough

Ph: 03 5461 1443
www.mshrv.com.au



How to get here

Rail

Maryborough and surrounds are serviced by V/Line, regional Victoria's train and coach operator. There are daily train services in each direction between Melbourne and Maryborough, via Ballarat, Creswick, Clunes, and Talbot. Many other towns in the area are serviced by V/Line coach services. Travelling with V/Line is easy, affordable and convenient. For more information visit www.vline.com.au or call 1800 800 007.

Bus

Visit www.viclink.com.au for details on bus services. Town Bus services are available seven days a week within Maryborough. Bus services to other small villages are available on selected

days. You can call the Central Goldfields Visitor Information Centre for further details and timetables.

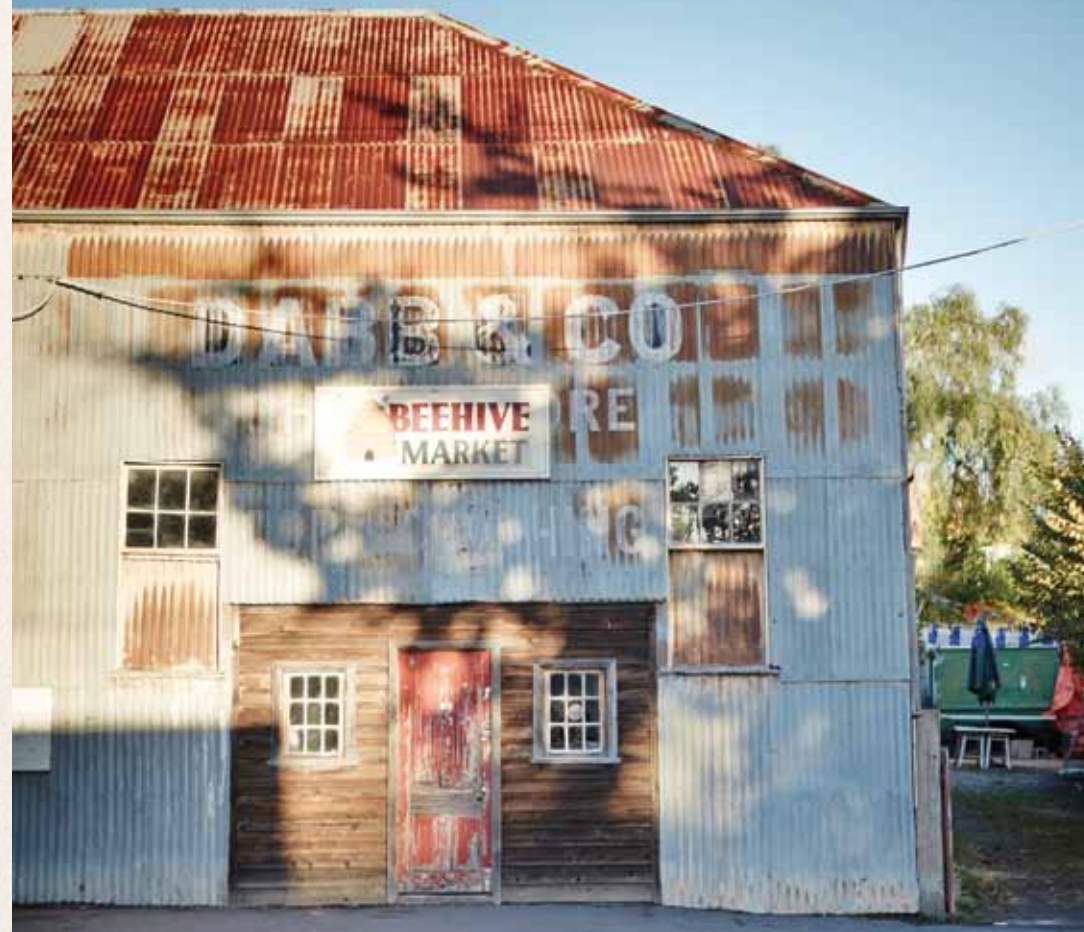
Car

The region is accessible from a number of directions. A 1 hour 50 minute drive up either the Calder Highway via Castlemaine or the Western Highway via Ballarat. The Pyrenees Highway also passes through the town connecting it to other parts of the state.

It is a short 45 minute drive to either Bendigo or Ballarat making Maryborough and Surrounds the perfect central base when visiting the Goldfields. ■

Explore the region

From artisans in Castlemaine, the natural beauty of Loddon Valley, to the regional arts centre of Bendigo – centre yourself and explore the region.





While the city shines with historic beauty, cosmopolitan Bendigo is firmly set in the now.

Bendigo

A vibrant regional city, Bendigo's beautiful streets are the legacy of one of the world's greatest gold rushes. Explore these streets to discover the heart of Bendigo; an arts culture led by the acclaimed Bendigo Gallery, dine at award-winning restaurants and cafés, unearth unique fashions and collectables.

Relive the gold rush by visiting our world-class attractions, and taste quality local wines and produce from markets, nearby farms, and surrounding vineyards.

Venture into the nearby Heathcote Region, a long-time favourite for serious wine lovers which also boasts great bushwalking/riding tracks, lookouts, shopping, dining and water sports at nearby Lake Eppalock. ■

Must Do

- Discover contemporary dining, boutiques, laneways and Australia's largest regional art gallery.
- Taste locally made wine, cider and craft beer.
- Search for gold underground at Central Deborah Gold Mine.
- Create a clay masterpiece at Bendigo Pottery.
- Meet the world's oldest and longest imperial dragons.
- Ride a vintage tram along the beautiful historic streetscapes.
- Experience Bendigo's Blues Music and Performing Arts Scene.
- Ride or walk a section of the beautiful O'Keefe Rail Trail.



Spend the day in the genuine little country towns of the Loddon Valley.

Loddon Valley

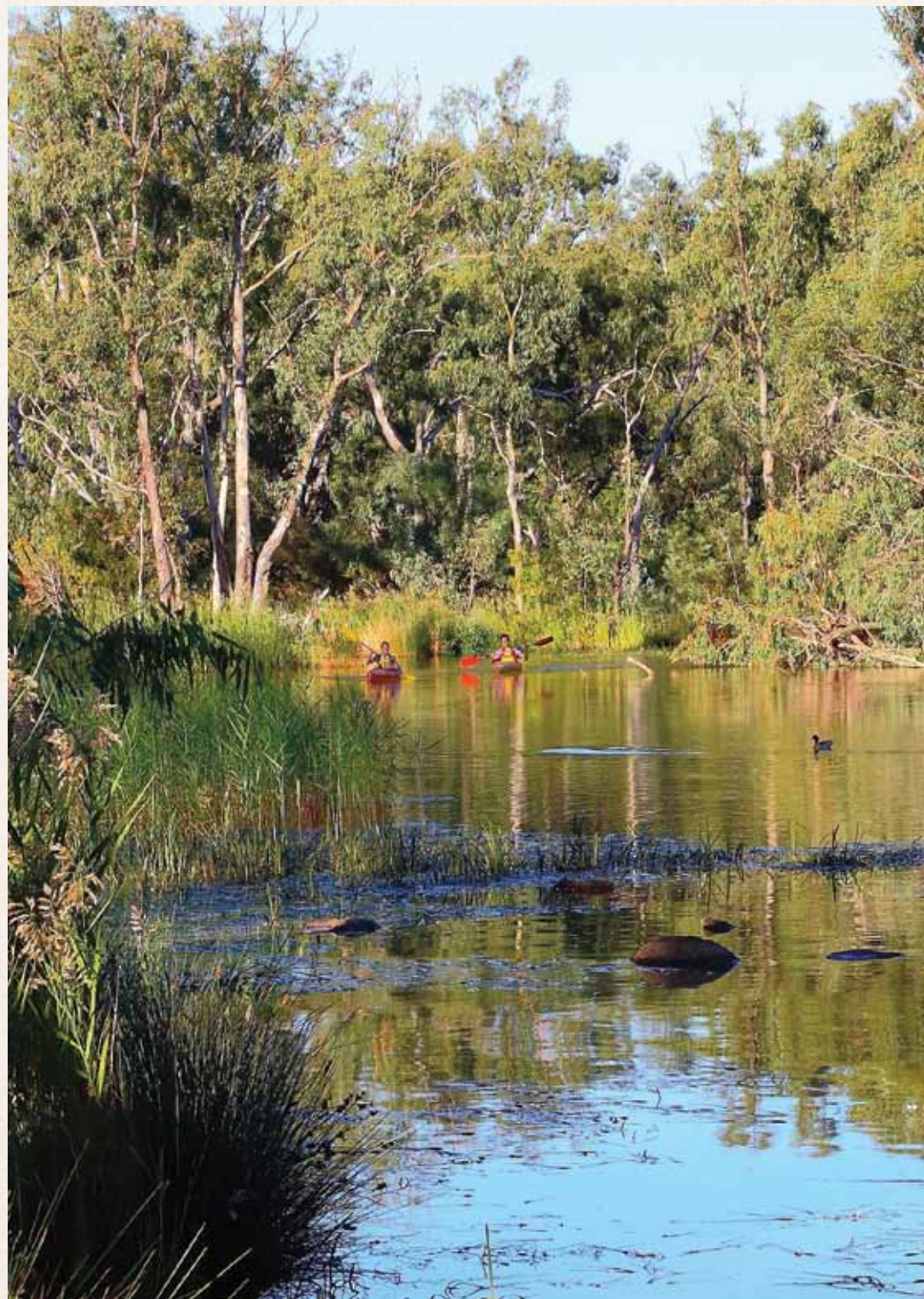
Take a deep breath... and travel along the meandering roads. They start at untouched historic villages, weave their way up to spectacular views on granite strewn hilltops, through ancient forests, and then alongside wide flowing rivers and vast wetlands.

In these charming towns you will meet warm characters who call these villages home. Lining the streets are clusters of antiques and collectible stores, and small shopfronts with some of the finest breads, meats and produce from the land.

Going through, you slow down. The pace of life changes and you begin to discover something that you thought long gone. Here you will be revived and inspired. ■

Must Do

- Visit the Simply Tomatoes farm gate in Boort for great food and country hospitality.
- Lose time in the antique and collectable shops of Inglewood.
- Visit the Eucalyptus Distillery Museum in Inglewood or the working Eucalyptus Stew Pot at Wedderburn.
- Launch your canoe, fishing or ski boat in the Loddon River at Bridgewater or swim in the natural infinity pool.
- See the amazing collection in Wedderburn's General Store Museum that was originally the goldfields shop.





Think creativity,
think eclectic, think
Castlemaine, Maldon
and surrounds.



Castlemaine

Castlemaine boasts a remarkable community of artists, writers, actors and designers, who offer a host of galleries, theatres, festivals, bookshops and boutiques. It's a theme that runs through nearby Maldon, Newstead and Harcourt.

Great food is another hallmark of this area. Some of the state's best chefs have invested in top quality gastro pubs, restaurants and cafés. Find multicultural cuisine, providers of local produce, cellar doors and cider makers.

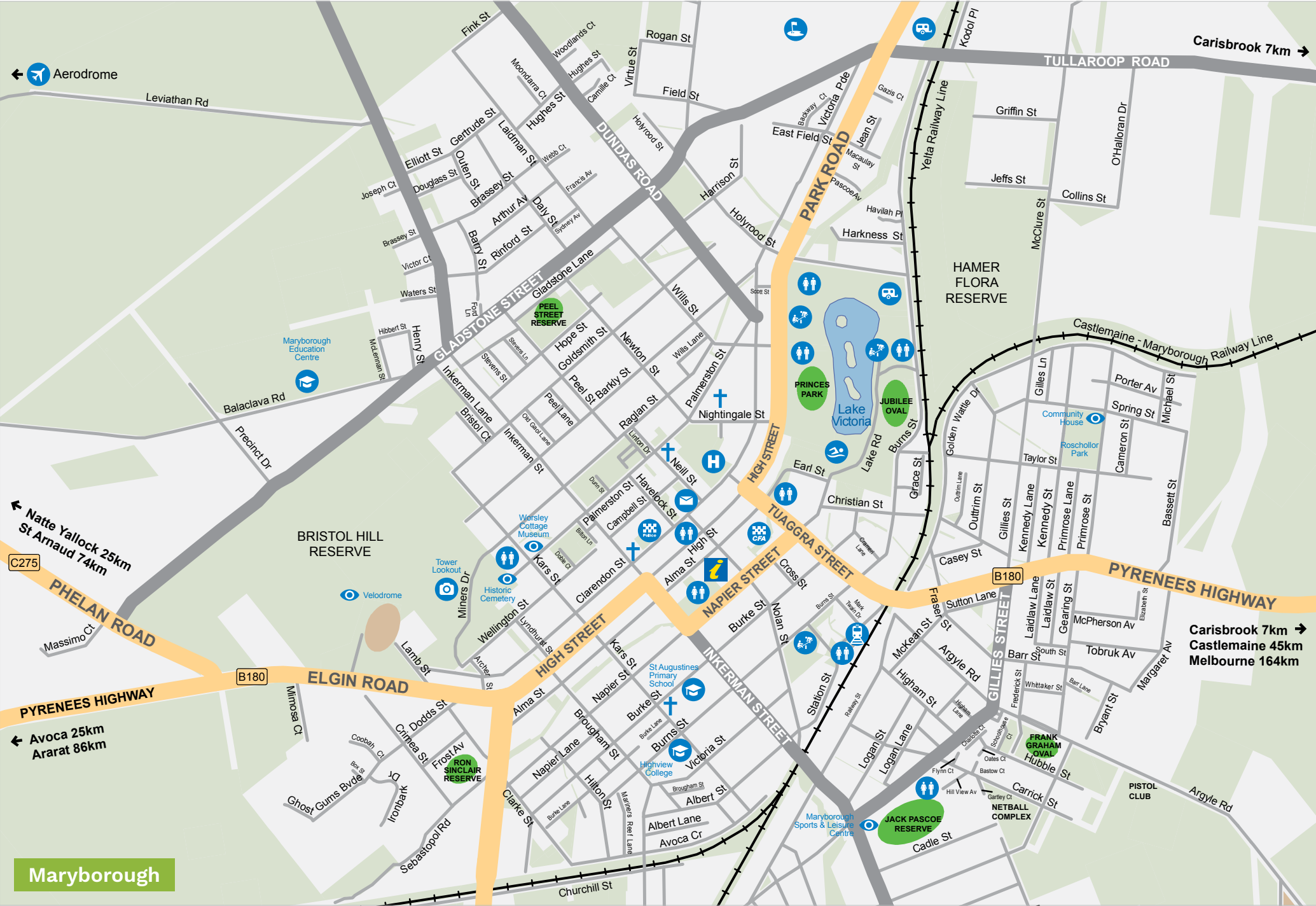
Discover contemporary experiences in repurposed historic spaces including The Mill, the Old Castlemaine Gaol, or the Public Inn located in the old Castlemaine Fire Station. Alternatively wander through bushlands and witness the legacy of the gold rush which shaped this region. ■

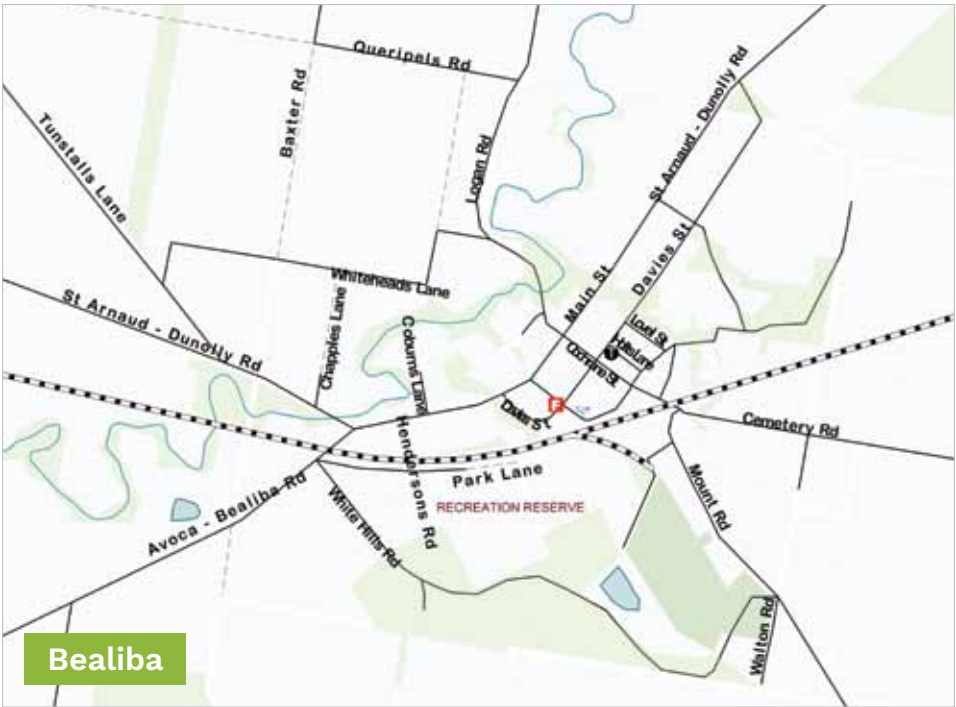
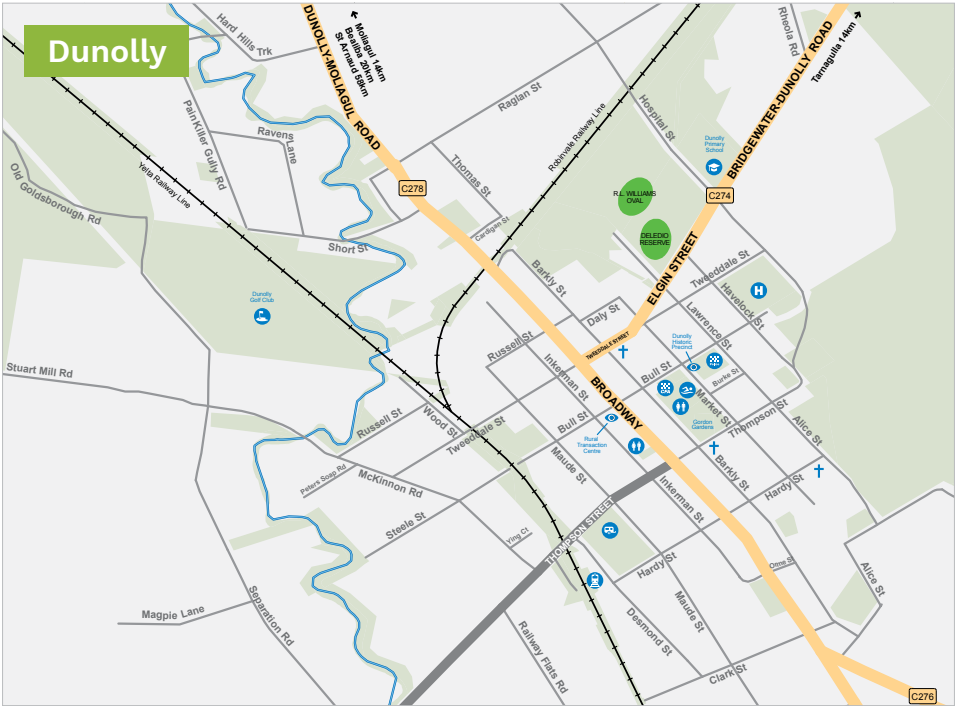
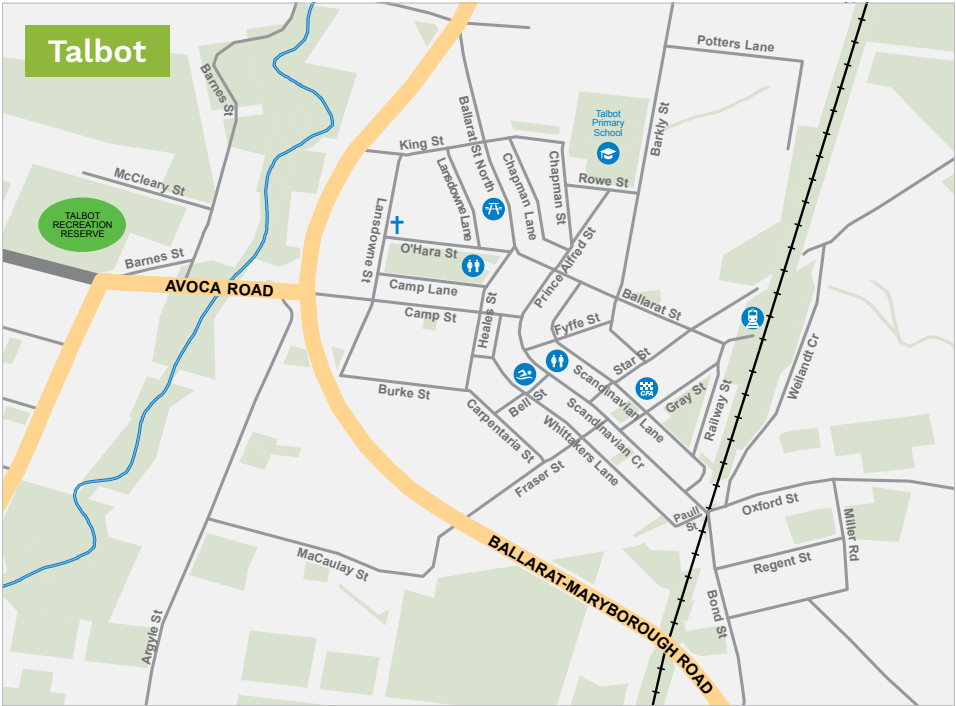
Must Do

- Visit beautiful Buda Historic Home and Garden.
- See Castlemaine Art Museum's remarkable collection.
- Ride the historic steam train from Maldon to Castlemaine.
- Explore eclectic vintage stores and antiquarian bookshops.
- Discover the foodie culture of the region.
- Catch a local gig or show.

For more information visit:
maldoncastlemaine.com.au







Important Information

Central Goldfields Shire Tourism and Visitor Services proudly bring you this guide to enhance your visitor experience to the region. We are committed to improving the quality and service in tourism.

Central Goldfields Visitor Information Centre

Cnr Alma & Nolan Streets,
Maryborough, Victoria 3465

Freecall: **1800 356 511**
Phone: **03 5460 4511**
Fax: **03 5460 5188**
Email: visitorinfo@cgoldshire.vic.gov.au
Website: www.visitmaryborough.com.au

Open 7 days, 9am – 5pm
(except Christmas Day and Good Friday).



**Maryborough
CMCA Dump Point**
Reservoir Road,
Maryborough, Victoria 3465

Disclaimer

This brochure was produced by Central Goldfields Shire Council. Design, Artwork & Project Management by SASI Marketing (www.sasi.com.au). Advertising Sales: Central Goldfields Shire Council. Printing: Centre State Printing, Maryborough, Victoria. Disclaimer: Central Goldfields Shire Council including its officers, agents and contractors (Publisher) has made every endeavour to ensure that the details appearing in this publication are correct at the time of printing, but accept no responsibility for any inaccuracy or mis-description, whether by inclusion or omission, nor does the Publisher accept any responsibility for subsequent change or withdrawal, of prices, details or services shown which are subject to alteration without notice. Photos have been generously supplied by: David Field, Richard Gibbs, Tom Pearce, Jayne Newgreen, Nola Tidyman, Adrian Cook, Ian Powell and Alex Cable.

Numbers to assist you

Ambulance / Fire / Police
Phone: 000

Maryborough Police
Clarendon Street, Maryborough
Phone: 03 5460 3300

Dunolly Police
Bull Street, Dunolly
Phone: 03 5468 1100

Maryborough Hospital
Clarendon Street, Maryborough
Phone: 03 5461 0333

Dunolly Hospital
Havelock Street, Dunolly
Phone: 03 5468 1000

Maryborough Taxi Service
Phone: 03 5461 1633

Injured Wildlife
Phone: 03 5461 2970 / 0419 356 433

Victorian Bushfire Info Line
Phone: 1800 240 667

Holiday Planning

Paddys Ranges State Park
www.parkweb.vic.gov.au

V/Line Services
www.vline.com.au

Country Fire Authority
www.cfa.vic.gov.au



junction motel



Premier King

Be Surprised!

**18 Ground Floor rooms offering modern
& contemporary styling and decor.**

**Choose from Economy Queen rooms;
Deluxe Queen, Twin and Two Bedroom Family rooms;
and Premier King rooms.**



Deluxe Queen



Deluxe Twin



Economy Queen



2 High Street, Maryborough VIC 3465

Ph: 03 5461 1744

Fax: 03 5461 4908

Email: info@maryboroughjunctionmotel.com.au
www.maryboroughjunctionmotel.com.au

FREE



“AUSTRALIA’S LONGEST CONTINUOUS SPORTING EVENT”



- 11am Pipe Band Street Parade
- Athletics all day featuring “Max Martin Memorial Gift”
- Carnival Rides
- Highland Dancing on 2 stands all day
- Strongmen Events
- Highland Games
- Band Displays & Massed March on oval
- Girl on Drum feature & much more!



FREE EVENING
CONCERT
+
FIREWORKS
DISPLAY!

FOR MORE INFO CALL MARYBOROUGH HIGHLAND SOCIETY
ON (03) 5461 1480 OR VISIT WWW.HIGHLANDSOCIETY.COM.AU

Proudly
Sponsored by

