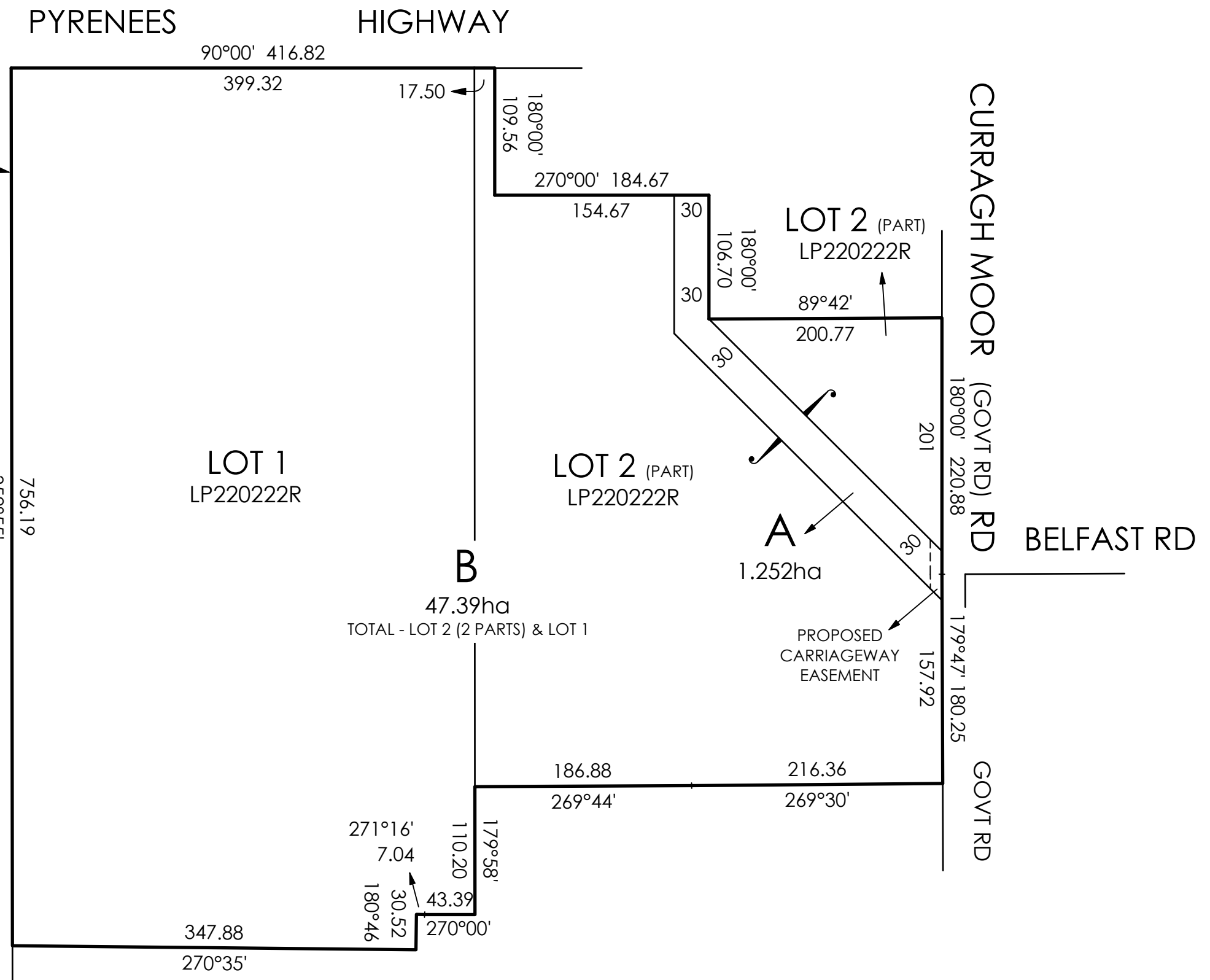


SUBJECT SITE:
 LOTS 1 & 2
 TP220222R
 Vol.8068 Fol.581
 48.64ha

POTTS
 (GOVT
 ROAD)
 LANE



- GENERAL NOTES**
- TITLE INFORMATION SHOWN ON THIS PLAN IS APPROX. ONLY AND IS BASED ON INFORMATION COLLATED BY TOMKINSON FROM NORMAL SOURCES AND SOME DISCREPANCIES MAY BE APPARENT. A COMPREHENSIVE INVESTIGATION OF ALIGNMENTS AND FREEHOLD TITLE HAS NOT BEEN MADE.
 - AREAS AND DIMENSIONS SHOWN ON THIS PLAN ARE INDICATIVE ONLY AND ARE SUBJECT TO CONFIRMATION BY A LICENSED SURVEYOR

REV	REVISION	DES	DWG	CHK	DATE
B	MOVE PROPOSED CARRIAGEWAY EASEMENT	PJL	AT	08/10/19	
A	AS SUBMITTED TO COUNCIL	PJL	AT	OCT'19	



Tomkinson Group

HEAD OFFICE: 57 MYERS STREET BENDIGO 3550 PH 03 5445 8700
 ABN 11 103 336 358 WWW.TOMKINSON.COM

SCALE 1:4,000
 LENGTHS ARE IN METRES - PAPER SIZE A3

© COPYRIGHT
 THE INFORMATION CONTAINED ON THIS DRAWING IS THE INTELLECTUAL PROPERTY OF TOMKINSON GROUP. COPYING OR USING THIS DRAWING IN WHOLE OR IN PART WITHOUT THE EXPRESS WRITTEN PERMISSION OF TOMKINSON GROUP INFRINGES COPYRIGHT

ISO 9001:2015
 Quality Management
 FSS22000

DIAL BEFORE YOU DIG
 www.1102.com.au

CARISBROOK FLOOD MITIGATION PROJECT
CARISBROOK
 Proposed Subdivision
 PART OF 4027 PYRENEES HWY, CARISBROOK
 SHIRE: CENTRAL GOLDFIELDS SHIRE COUNCIL

DWG STATUS: **PRELIMINARY**
 PROJECT & DWG No: 1163901 FM / PS3 B

NOTE: THIS IS AN UNCONTROLLED DOCUMENT AND WILL NOT BE UPDATED. IT IS THE RESPONSIBILITY OF THE USER TO CONFIRM THAT THIS IS A CURRENT COPY AND SUITABLE FOR THE PROPOSED USE. THIS SHEET MUST BE READ IN CONJUNCTION WITH ALL SHEETS OF THIS SET AND ANY ACCOMPANYING DOCUMENTS. PLOT DATE: 10/10/2019 FILE: C:\12\DATA\TOMKING\1163901 - CENTRAL GOLDFIELDS SHIRE COUNCIL, CARISBROOK LEVEE - 1242\PLANNING\CIVIL\3D\1163901 FLOOD MITIGATION PROJ\SUB3 REV06.DWG