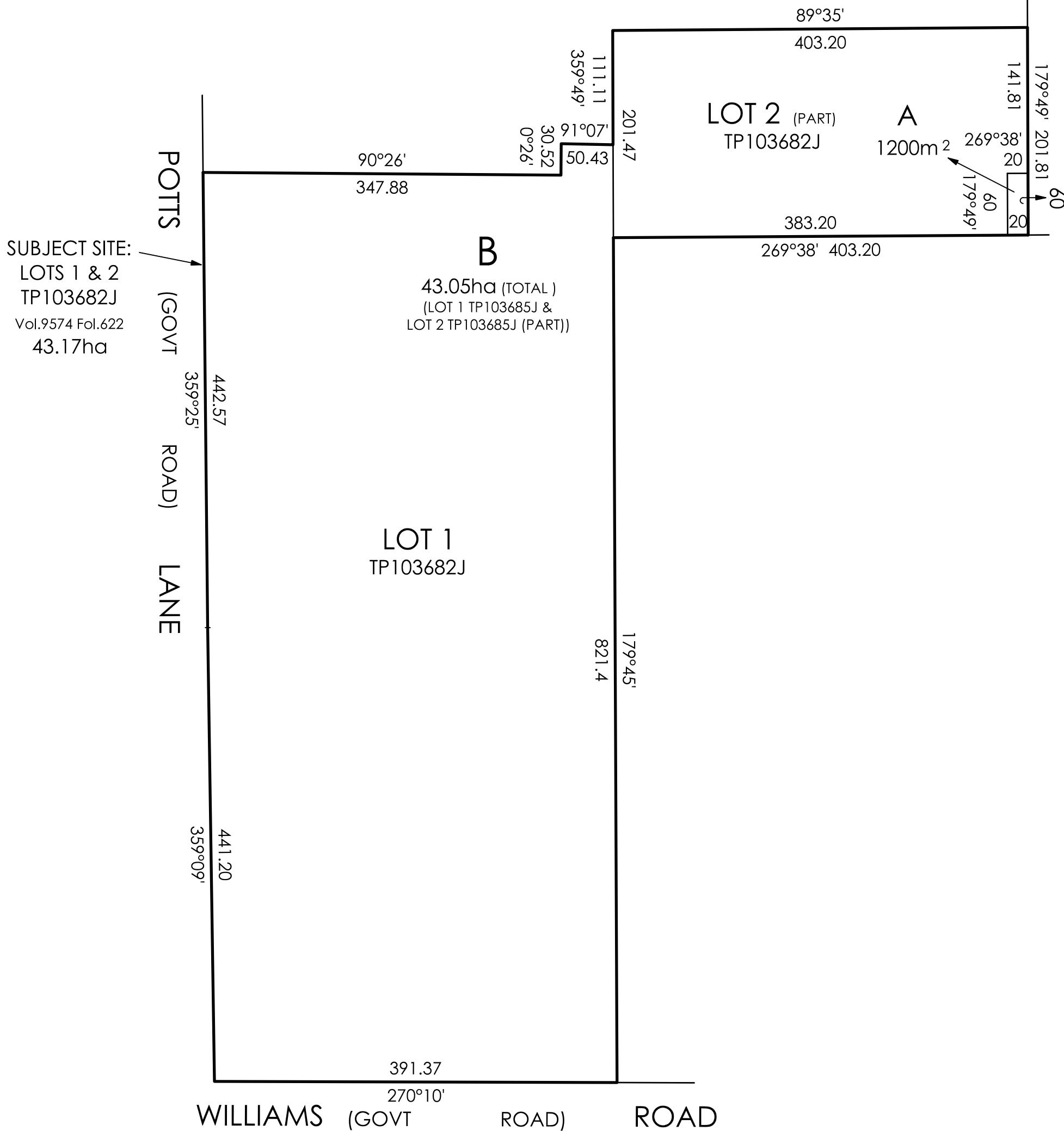


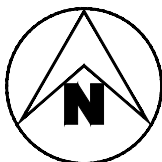
GOVERNMENT RD



**GENERAL NOTES**

- TITLE INFORMATION SHOWN ON THIS PLAN IS APPROX. ONLY AND IS BASED ON INFORMATION COLLATED BY TOMKINSON FROM NORMAL SOURCES AND SOME DISCREPANCIES MAY BE APPARENT. A COMPREHENSIVE INVESTIGATION OF ALIGNMENTS AND FREEHOLD TITLE HAS NOT BEEN MADE.
- AREAS AND DIMENSIONS SHOWN ON THIS PLAN ARE INDICATIVE ONLY AND ARE SUBJECT TO CONFIRMATION BY A LICENSED SURVEYOR

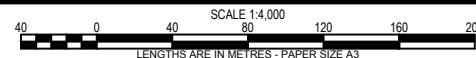
B LABEL LOTS 1 & 2 TP103682J	PJL AT 10/10/19
A AS SUBMITTED TO COUNCIL	PJL AT OCT'19
REV	REVISION DES DWG CHK DATE



HEAD OFFICE: 57 MYERS STREET  
 BENDIGO PH 03 5445 8700  
 ABN 11 103 336 358  
 WWW.TOMKINSON.COM



© COPYRIGHT  
 THE INFORMATION CONTAINED ON THIS DRAWING IS THE INTELLECTUAL PROPERTY OF TOMKINSON GROUP. COPYING OR USING THIS DRAWING IN WHOLE OR IN PART WITHOUT THE EXPRESS WRITTEN PERMISSION OF TOMKINSON GROUP INFRINGES COPYRIGHT.



**CARISBROOK MITIGATION PROJECT  
 CARISBROOK  
 PLAN TYPE**

PART OF 4027 PYRENEES HWY, CARISBROOK  
 SHIRE: CENTRAL GOLDFIELDS SHIRE COUNCIL

DWG STATUS: **PRELIMINARY** PROJECT & DWG No: 1163901 FM1/ PS4 B REV: 1

NOTE: THIS IS AN UNCONTROLLED DOCUMENT AND WILL NOT BE UPDATED. IT IS THE RESPONSIBILITY OF THE USER TO CONFIRM THAT THIS IS A CURRENT COPY AND SUITABLE FOR THE PROPOSED USE. THIS SHEET MUST BE READ IN CONJUNCTION WITH ALL SHEETS OF THIS SET AND ANY ACCOMPANYING DOCUMENTS. FILE: C:\12\DATA\1\TOMK\660-72\5011163901-CENTRAL GOLDFIELDS SHIRE COUNCIL CARISBROOK LEVEE 1212 PLAN\1163901 MITIGATION PROSUBA REV.B.DWG