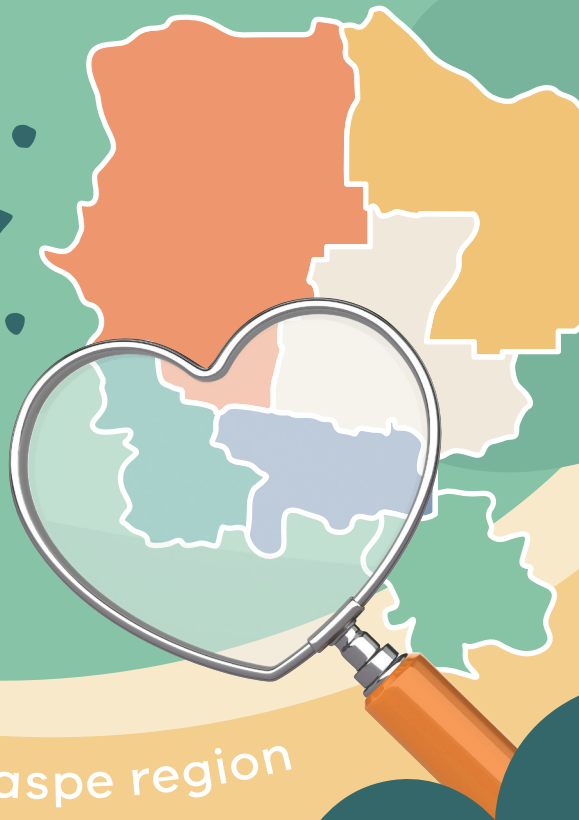


ADVENTURE Bingo!

Explore walks across the Loddon Campaspe region



ADVENTURE Bingo!

Explore a range of walks across the Loddon Campaspe region and check out the local sites along the way.

We've included six great walks to explore throughout the region, so why not work your way through the whole booklet over a few weekends?

The rules are simple:

- Choose your selected walk from the booklet and head there!
- Mark off the sites on the Bingo card as you see them
- Once you find all the sites in a straight vertical, horizontal or diagonal line you've got Bingo!



Win sporting equipment by sending us your Bingo card!

Email a pic of your completed Bingo card to hvh@bendigo.vic.gov.au along with your name and phone number and you're in the weekly draw!

Plus, win with our weekly photo prize draw

For another chance to win, take a photo of yourself with one of the items on your Bingo card and send it via Facebook message to @HealthyHeartofVictoria. Don't have Facebook? Send your photo to hvh@bendigo.vic.gov.au.

Prize period runs from Monday 23 November – Sunday 13 December, 2020.
For full terms and conditions visit bendigo.vic.gov.au/hvh.

You can join in Adventure Bingo at any time! So even after our prize period is over, you can still challenge your friends and family to see who gets Bingo first!

Contents

PAGE 2-3

Campaspe Shire

Campaspe Walking Track, Rochester

PAGE 4-5

Central Goldfields Shire

Goldfields Reservoir, Maryborough

PAGE 6-7

City of Greater Bendigo

Bendigo Creek Trail, Kangaroo Flat

PAGE 8-9

Loddon Shire

Nardoo Trail, Wedderburn

PAGE 10-11

Macedon Ranges Shire

Campaspe River Walk and town circuit, Kyneton

PAGE 12-13

Mount Alexander Shire

Castlemaine City Walk

Campaspe Shire

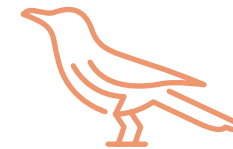
Campaspe Walking Track, Rochester

Approximate distance: **3km**

START

To download a digital version of this map visit campaspe.vic.gov.au. And to check out other walks in across Campaspe Shire visit campaspepcp.com.au or pick up a copy from the Kyabram or Rochester Council Service Centre.

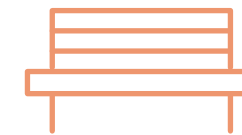
ADVENTURE Bingo!



a magpie



someone walking a dog



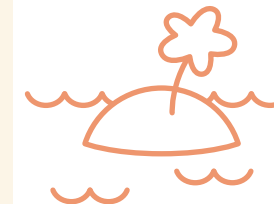
a place to sit



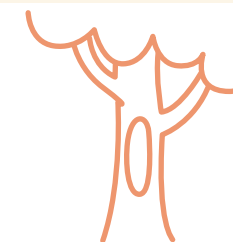
a place to play



a bridge



an island



a scar tree



a place to launch your boat



a painted silo

The Shire of Campaspe is the traditional lands of the Dja Dja Wurrung, Taungurung and Yorta Yorta peoples.

We respect and acknowledge their unique Aboriginal cultural heritage and pay our respect to their ancestors, descendants and emerging leaders as the Traditional Owners of this country.

We acknowledge their living culture and their unique role in the life of this region.

Central Goldfields Shire

Goldfields Reservoir, Maryborough

Approximate distance: **1.5km**
(go on, you can do two laps!)

To download a digital version of this map visit centralgoldfields.vic.gov.au

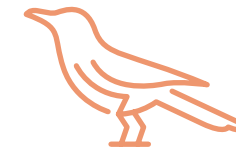


ADVENTURE Bingo!

Central Goldfields Shire Council acknowledges and extends appreciation for the Dja Dja Wurrung people, the traditional owners of the land.

We pay our respects to leaders and Elders past, present and emerging for they hold the memories, the traditions, the culture and the hopes of all Dja Dja Wurrung people.

We express our gratitude in the sharing of this land, our sorry for the personal, spiritual and cultural costs of that sharing and our hope that we may walk forward together in harmony and in the spirit of healing.



a magpie



someone walking a dog



a drinking water fountain



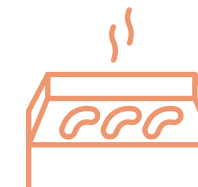
a place to sit



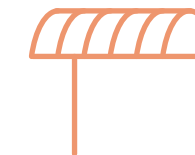
a nature play park



a bridge



a BBQ



somewhere to shelter



a duck

City of Greater Bendigo

Bendigo Creek Trail, Kangaroo Flat

Approximate distance: **2.5km**

To download a digital version of this map visit bendigo.vic.gov.au/hhv

START



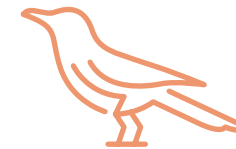
ADVENTURE Bingo!

The City of Greater Bendigo acknowledges we are on Dja Dja Wurrung and Taungurung Country.

We would like to acknowledge and extend our appreciation for the Dja Dja Wurrung People and the Taungurung People, the Traditional Owners of the land that we walk and cycle on today.

We pay our respects to leaders and Elder's past, present and emerging for they hold the memories, the traditions, the culture and the hopes of all Dja Dja Wurrung Peoples and Taungurung Peoples.

We express our gratitude in the sharing of this land, our sorrow for the personal, spiritual and cultural costs of that sharing and our hope that we may walk forward together in harmony and in the spirit of healing.



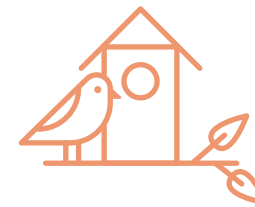
a magpie



someone walking a dog



a drinking water fountain



a birdhouse



Bendigo Creek Trail sign



outdoor exercise equipment



an animal made from wood



a bridge



The Kangaroo Flat Library

Loddon Shire

Nardoo Trail, Wedderburn

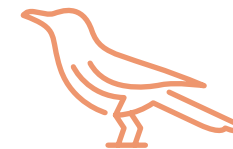
Approximate distance: **1.1km**
(go on, you can do two laps!)

To download a digital version of this map visit loddon.vic.gov.au

START



ADVENTURE Bingo!



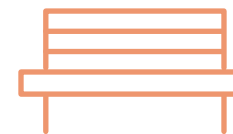
a magpie



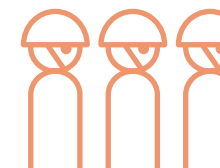
someone walking a dog



a drinking water fountain



a place to sit



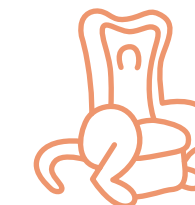
soldier statues



outdoor exercise equipment



someone playing sport



The Kangaroo Chair



a place to play

Loddon Shire Council acknowledges the Traditional Custodians of the land comprising the Loddon Shire Council area. Council would like to pay respect to their Elders both past and present.

Macedon Ranges Shire

Campaspe River Walk and town circuit, Kyneton

Approximate distance: **3.8km**

Tip: follow the trail from the Botanic Gardens through to St Agnes Place and back for a shorter walk

To download a digital version of this map visit mrsc.vic.gov.au/healthy-heart



ADVENTURE Bingo!

We acknowledge that Macedon Ranges Shire is located on Dja Dja Wurrung, Taungurung and Wurundjeri Country whose ancestors and their descendants are the traditional owners of this Country.

We acknowledge that they have been custodians for many centuries and continue to perform age older ceremonies of celebration, initiation and renewal.

We acknowledge their living culture and their unique role in the life of this region.



a magpie



someone walking a dog



a drinking water fountain



a place to sit



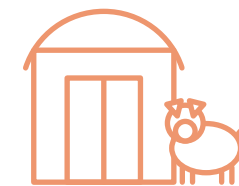
a greeting to Taungurung Country



a map on a sign



a bridge



an old pig shed



outdoor exercise equipment

Mount Alexander Shire

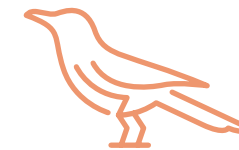
City Walk Castlemaine

Approximate
distance: **2km**

To download a digital
version of this map visit
mountalexander.vic.gov.au



ADVENTURE Bingo!



a magpie



someone
walking a dog



a drinking
water fountain



a place to sit



a ping pong table



a pedestrian
crossing



Bunjil the Eagle



a bridge



a fruit and
veggie shop

We acknowledge that Mount Alexander Shire Council is on Jaara Country of which the members and Elders of the Dja Dja Wurrung community and their forebears have been custodians for many centuries and have performed age old ceremonies of celebration, initiation and renewal.

We acknowledge their living culture and their unique role in the life of this region.

About Healthy Heart of Victoria

Healthy Heart of Victoria (HHV) is an initiative aimed at improving the health outcomes of people in the Loddon Campaspe region – the ‘heart’ of Victoria.

The initiative was developed in response to the higher than Victorian average rates of obesity, chronic disease and high-risk health behaviours within the region.

HHV projects are designed to focus on those parts of the community that are the least active and least supported.

There are six local government areas involved in the initiative – Campaspe Shire, Central Goldfields Shire, City of Greater Bendigo, Loddon Shire, Macedon Ranges Shire and Mount Alexander Shire.

HHV is proud to have delivered a number of infrastructure and activation solutions to support community members in the Loddon Campaspe region to be more active, more often, including:

- Outdoor fitness equipment
- Seating
- Drinking fountains
- Path and trail improvements
- Signage
- Solar lighting
- Play equipment

Follow us on Facebook!
[@healthyheartofvictoria](#)



The Healthy Heart of Victoria initiative is supported by the Victorian Government